

architecture PORTFOLIO+CV



DIOMIRA CUOMO
ARCHITETTO



Diomira Cuomo

ARCHITECT

Name and Surname:	Diomira Cuomo
Date of Birth:	07/03/1992
Address:	Salerno (SA), IT
Nationality:	Italian
Mobile Phone:	+39 3385965075
E-mail:	diomiracuomoarchitetto@gmail.com
LinkedIn:	Diomira Cuomo
Website:	https://www.diomiracuomoarchitetto.it/

EXPERIENCES

2018 - 2023

Studio DAZ Architetti Associati, Naples, Italy

Piazza Municipio Subway Station by Álvaro Siza + Eduardo Souto de Moura, Naples

- Project drafting collaboration
- Maquette 1:50

Cruise Ship Design

- MSC: Retail shops design
- MSC Euribia, Saint Nazaire, France
- Royal Caribbean, Cadiz, Spain: design supervisor

Art Exhibition Design

- Noor Riyadh Light Art Exhibition, Saudi Arabia

Interior Design

- Private interior design collaboration

CologneApart, Stolkasse + Adler Bauprojekt, Germania

- Housing project

2023 - ongoing

CARLOCUOMOASSOCIATI srl, Salerno, Italy

Urban Planning

- PUC Campagna (SA): urban planning design
- PUA CR7 (SA): residential building types development

Competitive Tender

- BIM Specialist

Competitions

- Concorso Portici (NA) - Construction of seasonal demountable equipment to serve the coastline
- Honorable Mention

Ongoing	<div>PERSONAL WORKS</div> <div> <div>2025 - ongoing</div> <div>Interior MTA, Salerno, Italy</div> </div> <div> <div>2025 - completed</div> <div>A Japan Interior, Salerno, Italy</div> </div> <div> <div>2025</div> <div>International Competition “Kaira Looro, Nursery School”, Senegal</div> </div> <div> <div>2025</div> <div>International Competition “Reuse the Abbey”, Italy</div> </div> <div> <div>2024</div> <div>International Competition “Iceland Cabin Snow”, Iceland</div> </div> <div> <div>2024</div> <div>National Competition “Nuova scuola dell’infanzia Tagliabue”, Villa-santa (MB), Italy</div> </div> <div> <div>2024 - completed</div> <div>Interior MN, Salerno, Italy</div> </div> <div> <div>2023 - completed</div> <div>Interior RM, Salerno, Italy</div> </div> <div> <div>2022 - completed</div> <div>Interior AP, Salerno, Italy</div> </div> <div> <div>2022</div> <div>National Competition “Futura - La Scuola per l’Italia di Domani”: edificio scolastico S. di Giacomo, Agerola (NA), Italy</div> <div>- Second Prize</div> </div> <div> <div>2022 - completed</div> <div>Lions Club Onlus Garden, Salerno, Italy</div> </div> <div>PROJECT-BASED WORK</div> <div> <div>2019</div> <div>Adler Bauprojekt gmbh, Frankfurt am Main, Germany</div> </div> <div> <div>Cologne Apart, Stolkgasse</div> </div> <div> <div>ongoing</div> <div>3D Life Srl</div> </div> <div> <div>BIM modeling and Twin Model</div> </div>
WORKSHOP	
july 2023	<div>Visual Identities - by Blam Team, G. Boffo, R. Ciarambino</div> <div>Brand identity of iMorticelli</div>
june 2023	<div>Largo di Comunità! - by Blam Team and BAG Studio</div> <div>Largo Plebiscito liberato (SA) urban workshop</div>

EDUCATION	
2018	<div>Stage</div> <div>Piazza Municipio Subway Station (NA) by Álvaro Siza+Eduardo Souto de Moura</div>
2017 - 2018	<div>Postgraduate Mater</div> <div>Master Neapolis - Designing excellence for the historic city by Ferruccio Izzo</div>
novembre 2017	<div>Master’s Degree</div> <div>Master’s Degree at University of Naples “Federico II” - Full marks</div>
2016	<div>Internship</div> <div>MANN - Naples National Archaeological Museum</div>
2015 - 2016	<div>Part-time Student Job</div> <div>Library of Palazzo Gravina - Architecture Area</div>
2013 - 2014	<div>Erasmus</div> <div>Bauhaus Universität Weimar</div>
2011 - 2012	<div>Student Design Competition</div> <div>MELA, MACBA of Barcelona</div>
2010	<div>High School Diploma</div> <div>High School “T. Tasso”, Salerno</div>
LICENSES	
march 2024	<div>BIM Specialist</div> <div>ICMQ License according UNI 11337–7 2018</div> <div>- Discipline “Architecture”</div>
october 2018	<div>Licensed Architect</div> <div>University of Naples “Federico II”</div> <div>- Architect qualification</div>

LANGUAGE CERTIFICATIONS

october 2022	Goethe Zertifikat B2
	- Official German Certification B2 level

DRIVING LICENSES

april 2017	European Driving License B
------------	----------------------------

EXHIBITIONS

2024	Assafà Festival - Immagini che fomento!
	- Illustration exhibition
2014 - 2019	Bauhaus Universität Weimar
	- 100 Jahre Bauhaus
	- Summaery 2014

PUBLISHINGS

2017	Rezzuti C. + Scolavino Q.
	Concerto per archi e fili d'erba, Napoli, Artstudiopaparo
2016	Bergquist M.
	Ashes to Ashes, Encausti, Napoli, Atipografia
2013	Santangelo M.
	Il progetto come conoscenza. Leggere, disegnare, viaggiare, Napoli, Editoriale Scientifica

LANGUAGE SKILLS

Italian	Mother Tongue
English	B2
Tedesco	B2

SOFTWARE SKILLS

Autodesk - AutoCAD - 2D/3D	● ● ● ● ●
Graphisoft - Archicad - BIM	● ● ● ● ●
Autodesk - Revit - BIM	● ● ○ ○ ○
Epic Games - Twinmotion	● ● ● ● ●
Adobe - Photoshop	● ● ● ● ●
Adobe - Illustrator	● ● ● ○ ○
Adobe - Indesign	● ● ● ○ ○
Microsoft Office - Word, Excel, PPT	● ● ● ● ●
ACCA - Primus	● ● ● ● ○

ADDITIONAL SKILLS

Handmade drawing	● ● ● ● ●
Maquette	● ● ● ● ○
Photography	● ● ● ○ ○

EXTRA

2024	OPEN HOUSE
	Open House volunteer - Turin
	Open House volunteer - Naples

INTERESTS AND ACTIVITIES

Interests
Art Cinema Music Literature Trips Nature
Present Activities
Comics Drawings Yoga
Past Activities
Singing G. Verdi Theatre Choir, Salerno Violin Guitar Sailboat Volleyball Rhytmic Gymnastic

index



Kaira Loro, Nursery School - **International Competition**
p: 15



Interior MN - **Interior Design Project - completed**
p: 21



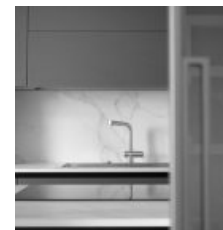
Iceland Cabin Snow - **International Competition**
p: 27



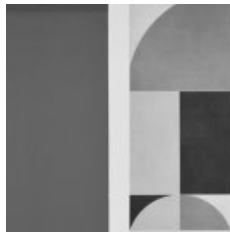
Futura: the school for tomorrow's Italy - **National Competition - Second Prize**
p: 33



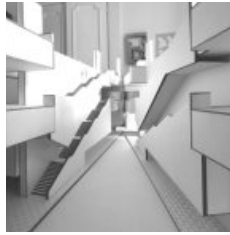
New Kindergarten "Tagliabue" - **National Competition**
p: 39



Interior AP - **Interior Design Project - completed**
p: 43



Interior RM - **Interior Design Project - completed**
p: 49



Piazza Municipio Subway Station by Álvaro Siza + Eduardo Souto De Moura - **Maquette on commission** by Studio DAZ
p: 55



NOOR "Light upon Light" - Riyadh Exhibition 2021 - **Collaboration** with Studio DAZ
p: 61



MSC + Royal Caribbean retail - **Collaboration** with Studio DAZ
p: 65



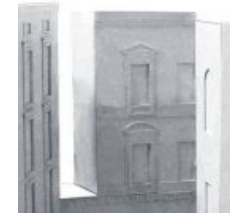
Housing Köln - **Collaboration** with Studio DAZ + Adler Bauprojekt
p: 69



New centrality in Piazza Santini - **Competition** with CARLOCUOMOASSOCIATI
p: 73



Piazza Municipio Subway Station by Álvaro Siza + Eduardo Souto De Moura - **Collaboration+ Internship**
p: 77



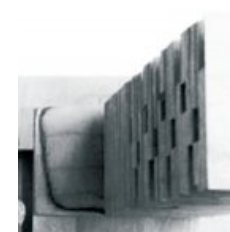
Archeology and connection - **Postgraduate Master** "Designing excellence for the historic city"
p: 83



Salus per Architectura - **Master's Degree** architectur and urban design project
p: 87



MANN - **Internship**
p: 91



Vertical Addis - **Bauhaus Universität Weimar** - Erasmus Master Design course
p: 95

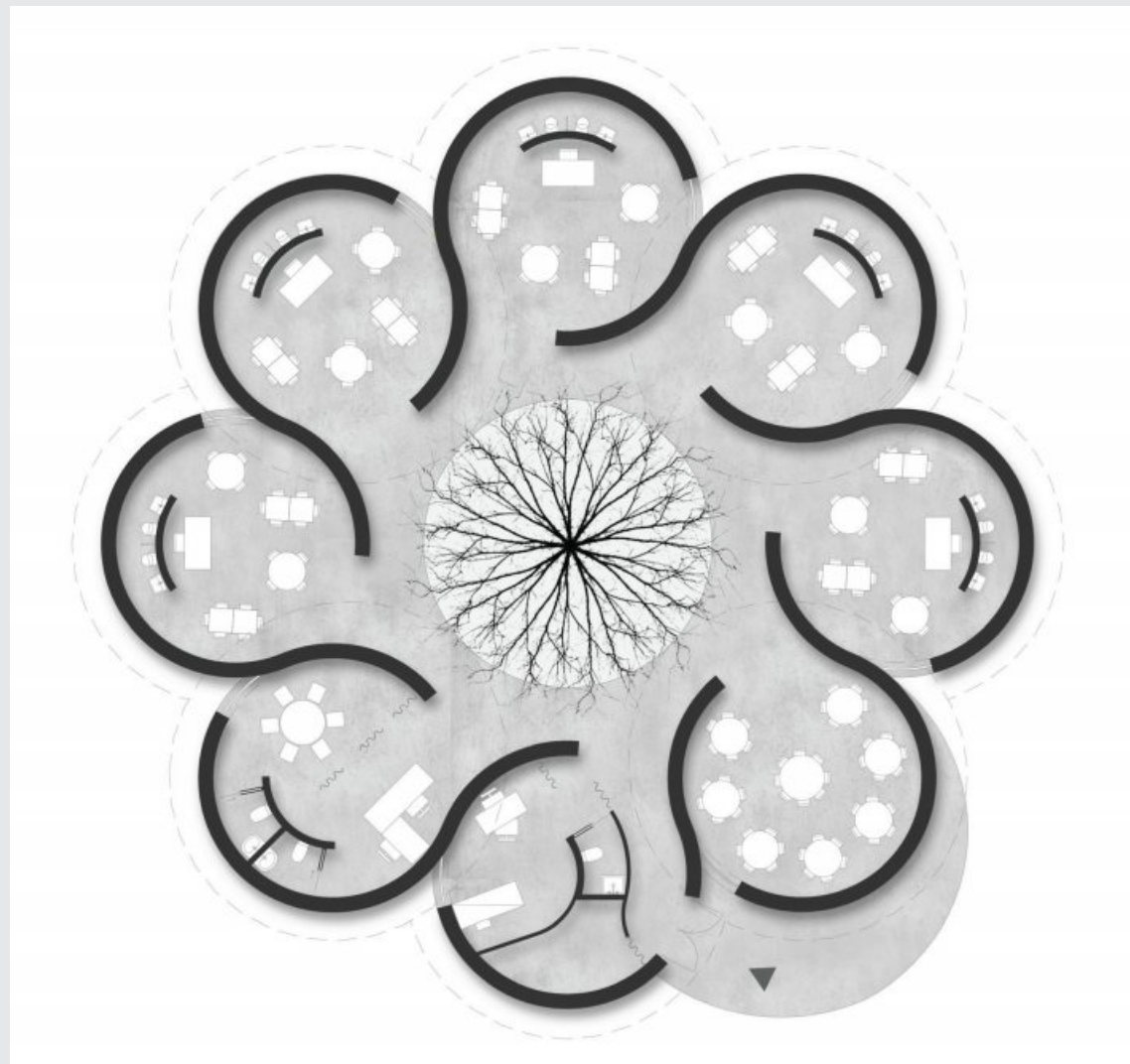


Paestum + Ercolano - **Architecture Drawings**
p: 101

Kaira Loro, Nursery School

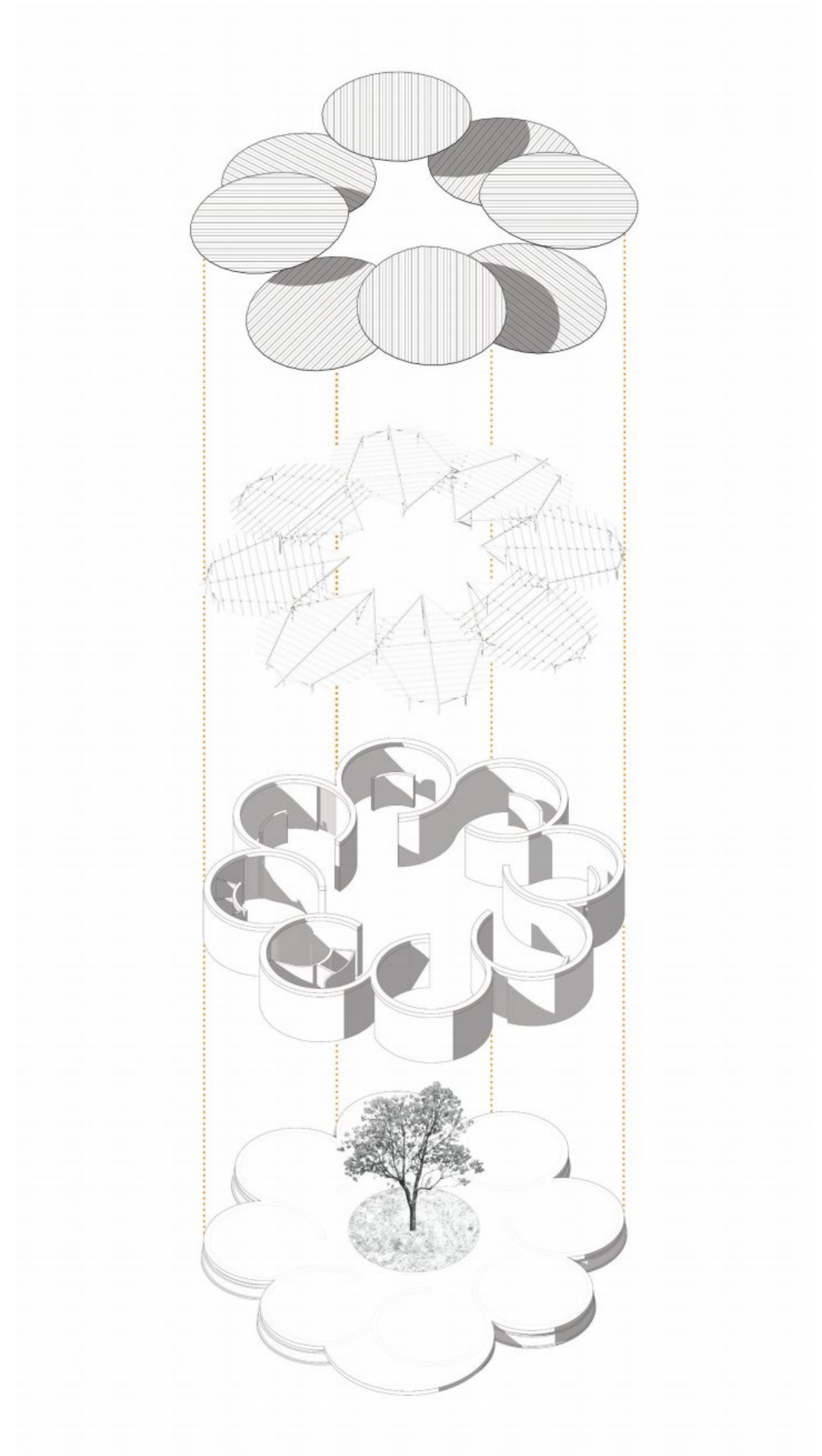
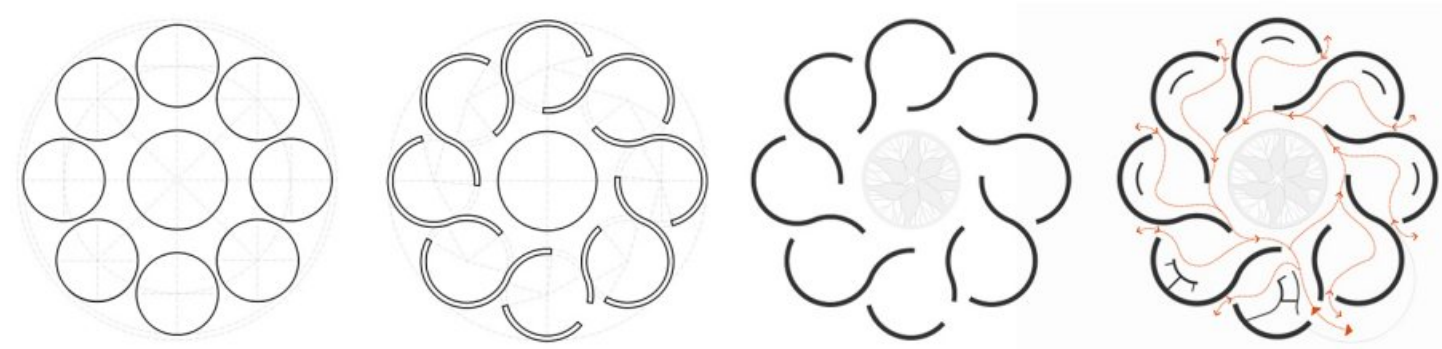
International competition





The project concept is inspired by typical African tribal villages, where several independent buildings, usually circular in shape, are grouped around a central courtyard dominated by a majestic, shady tree. The desire to recreate the atmosphere of a small, self-contained village, together with the desire to create a protected and introspective environment, all facing the coolness and security of the inner courtyard, led to the choice of a circular layout, sized to respect the maximum usable area. The decision was made not to create blocks closed by doors but, taking advantage of the natural geometry created, to open direct passages between the circumferences and the central courtyard, making the connection with the greenery direct and continuous. All the rooms open up towards the centre, like the corolla of a flower. The five classrooms are located in five different circumferences, housing orderly and practical activities. Each classroom has its own service area, open on both sides so that it can be easily accessed by young users. The tree that stands in the centre of the courtyard is a mango tree, a species that is widespread in Senegal and particularly suitable for use in a courtyard thanks to its small trunk, the good shade it provides and its relatively rapid growth. Each circumference has an opening facing outwards, consisting of a lattice panel. The panel, which is usually fixed, can be used as an emergency exit door. Each circumference is designed as an independent module, allowing for flexible readjustment of functions in the event of maintenance and temporary closure of part of the building.

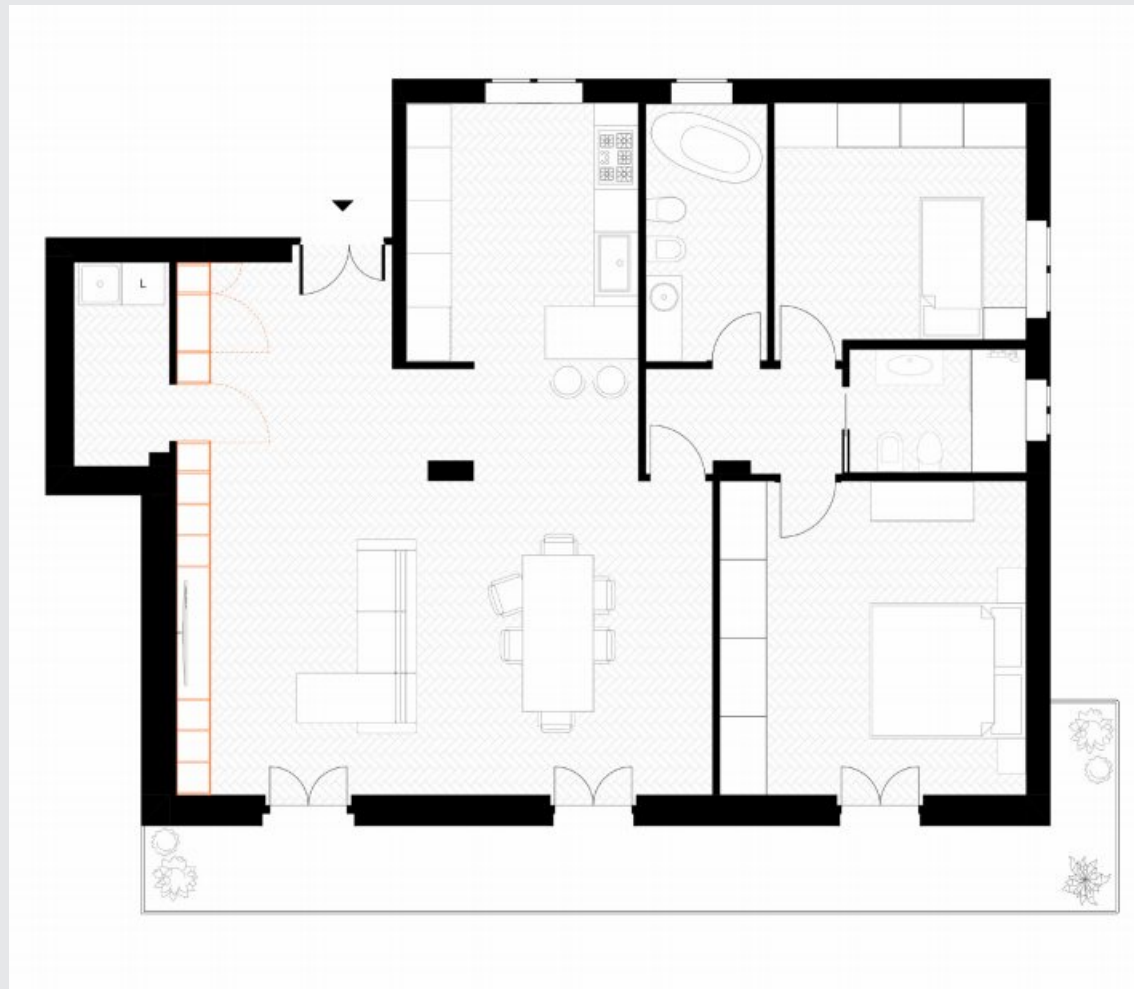




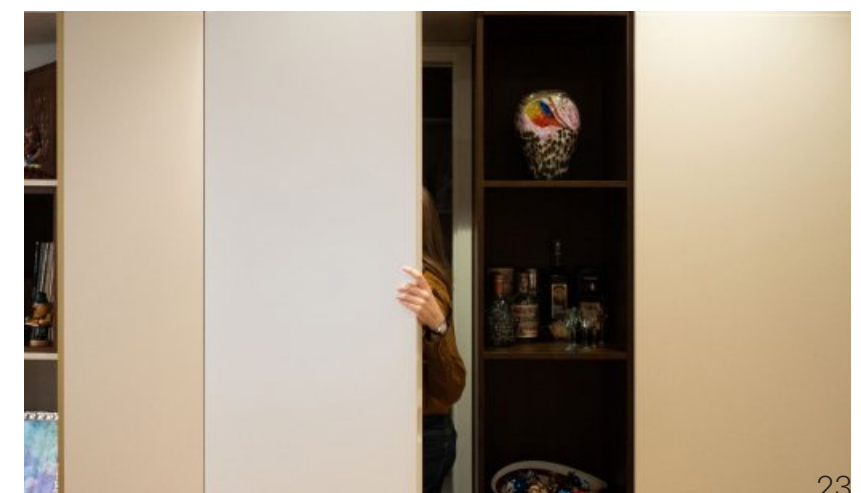
Interior MN

Interior Design Project - Completed





An interior design project for a young couple, developed to expand the spaces intended for socialising and create a separation between the living and sleeping areas. The internal layout of the flat was enhanced by the creation of custom-made carpentry modules, enhancing the reception areas and screening off the service areas. The aim of the project was to expand the living area and divide the living room from the sleeping area, while optimising the service areas. The decision was made to create a single large space including the living room, kitchen and dining area. The kitchen was positioned away from the entrance area, in a more private space. The large wall in the living room was customised with the creation of a bespoke piece of furniture, designed specifically for the space. The presence of a pre-existing storage room, which would have been too visible from the living room with the new layout, led to the decision to incorporate an access door to the storage room into the wall unit, camouflaged with the other cabinet doors. The door completely conceals the utility area, preserving the elegance of the living area. The dining area has been positioned next to the kitchen, also away from direct view from the apartment entrance. The kitchen opens onto the dining area. Both walls were used to optimise the placement of furniture and appliances, but at the same time, a snack counter was added, which also serves as a work surface. The division between the living area and the sleeping area is marked by a full-height partition door covered in wooden panelling. The distinctive feature of the door makes it stand out from the other doors in the common rooms, clearly marking the transition from one area of the house to another.

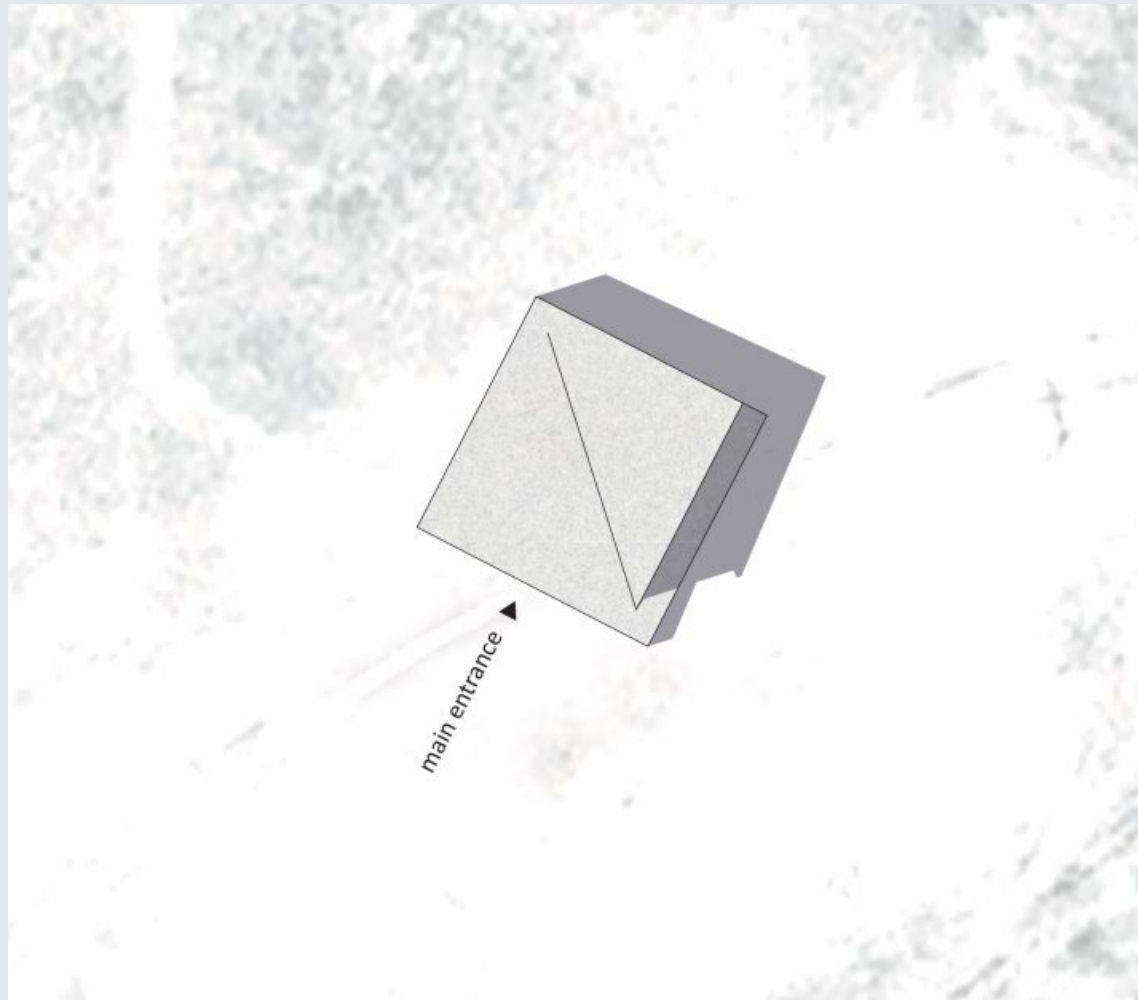




Iceland Cabin Snow

International Competition





The Cabin Snow project was born from the idea of connecting Iceland's fascinating heritage with contemporary project design. Iceland's volcanic rock and rich highland setting gave life to the starting concept. The idea was to create a volume so that it would be a natural extension of the local terrain, carved into the Icelandic rock. The project has been conceived as a block of lava stone that soars upward from the ground, like a portion of the earth's crust fracturing and pushing its way to the surface. Starting with a grid, the construction axis was traced wrapped around itself within the created square, culminating with a diagonal on the median axis. The gradual upward extrusion of the vertices generates the building's volumetry. The idea was also to create an envelope that was totally walkable not only internally, but especially externally. There was a desire to create an elevated promenade, which would not only meet the demand of having a "rooftop terrace," but would go further, transforming the entire roof of the building itself into a terrace at different heights. It is possible to walk through the roof of the building at 360°, admiring the surrounding landscape all around. The building is oriented with the apex of the diagonal pointing South, so as to take advantage of as many hours of light as possible in the winter period and so as to orient the two large windows toward the West and East, that is, toward the ski slopes and the surrounding landscape.

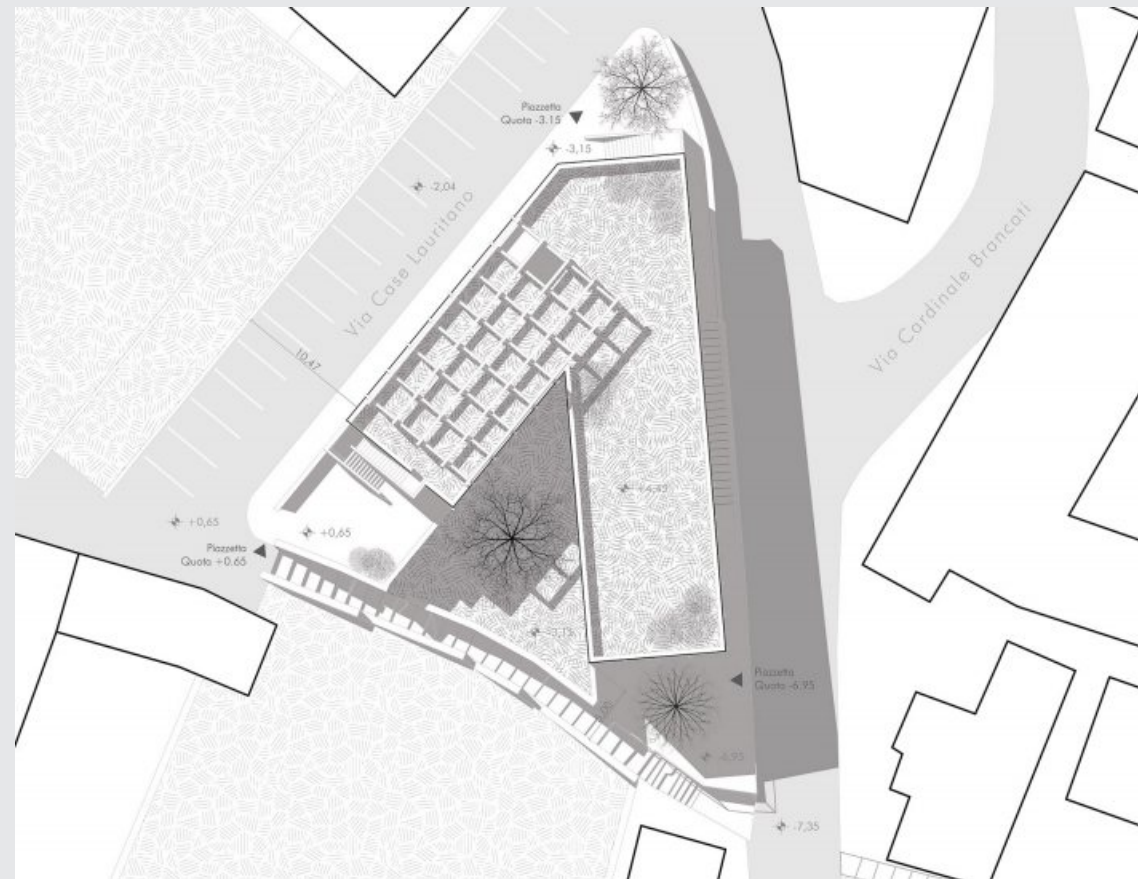




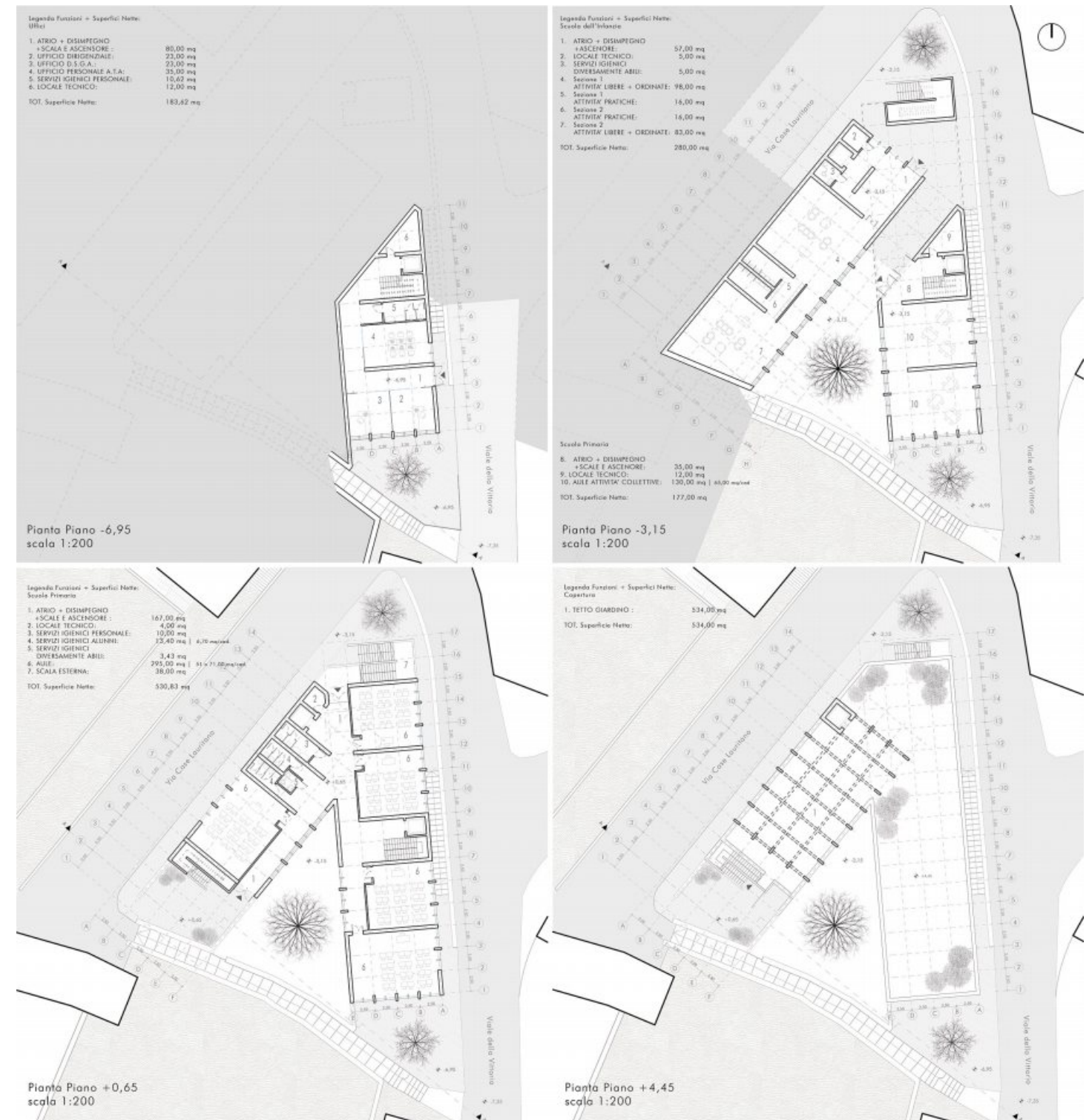
Futura - The school for tomorrow's Italy

National Competition for a new school in Agerola (NA) - Second Prize





The architectural quality of this project is in the urban dimension of the building. The project lot is currently almost entirely occupied by the existing school building. The design proposes to arrange the functions on three levels that follow the natural terracing of the land, creating a green courtyard in the central part of the lot, so as to minimize the occupation of the area and thus create three new public squares and a central green space. Access to the school building is from the three pedestrian plazas located at different elevations. With reference to the level 0.00, the three small squares are located at level - 6.95 (office entrance), level - 3.15 (pedestrian entrance to the kindergarten), level + 0.65 (entrance to the roof garden and elementary school). Simple volumes were worked with, recalling an ancient urban dimension made of filter spaces between interior and exterior. An ancient urban element was recovered: a stone staircase that perhaps originally connected the different cultivated terraces. The roof terraces, in addition to serving for the installation of photovoltaic panels, were treated as equipped green gardens. Special attention was paid to the indoor learning spaces, which all have a direct opening to the outside, so as to constitute outside a symmetrical green classroom. In addition to making all outdoor areas walkable, the roofs were also made accessible. The terraces themselves were designed to be public places accessible from the outside as well.





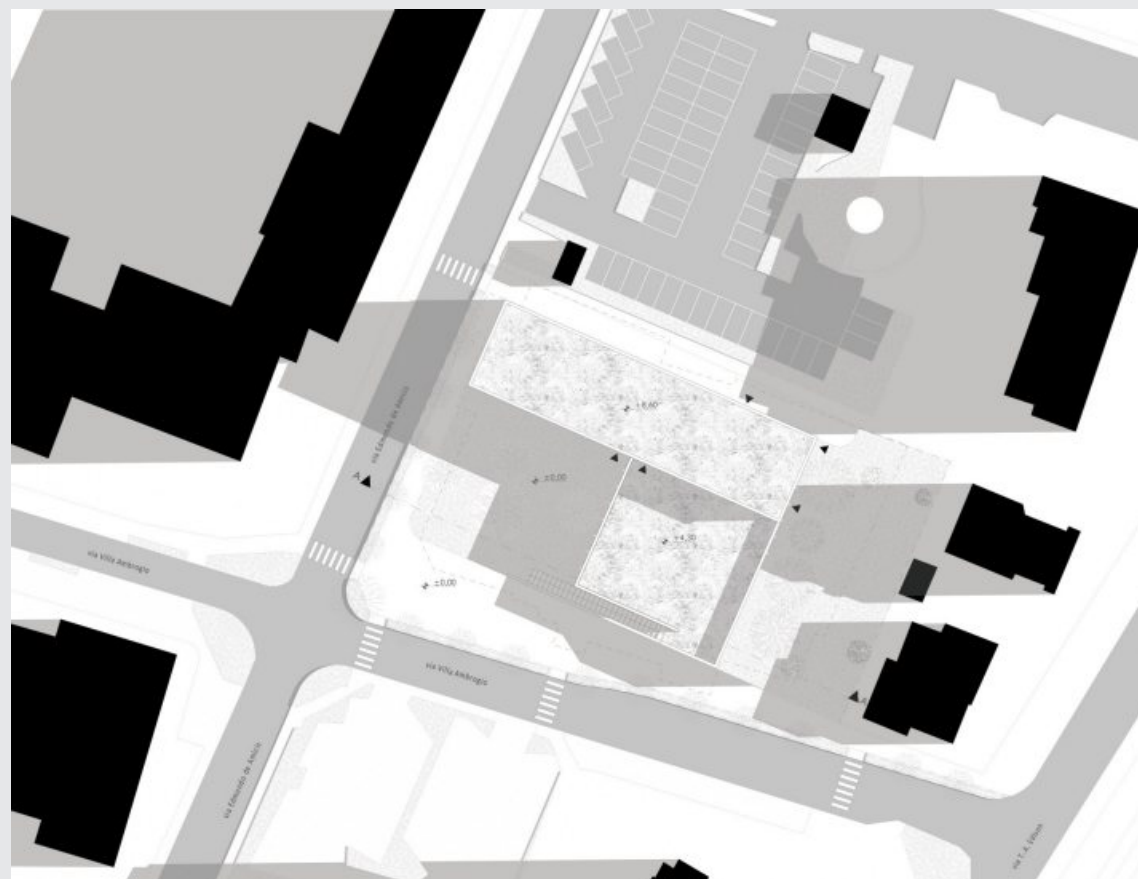
Sezione A-A
scala 1:200



New Kindergarten “Tagliabue”

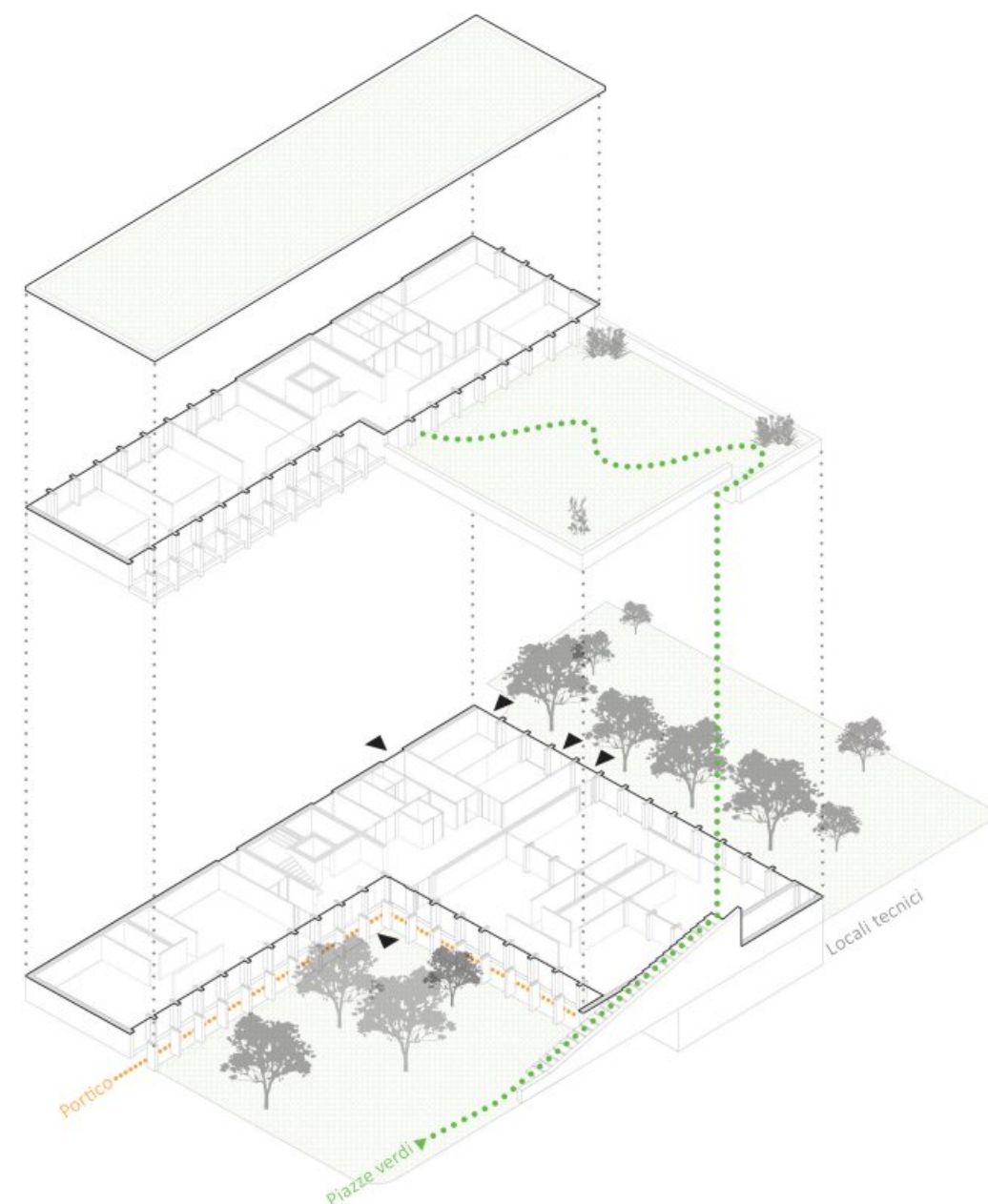
National Competition for a new school in Villasanta (MB)



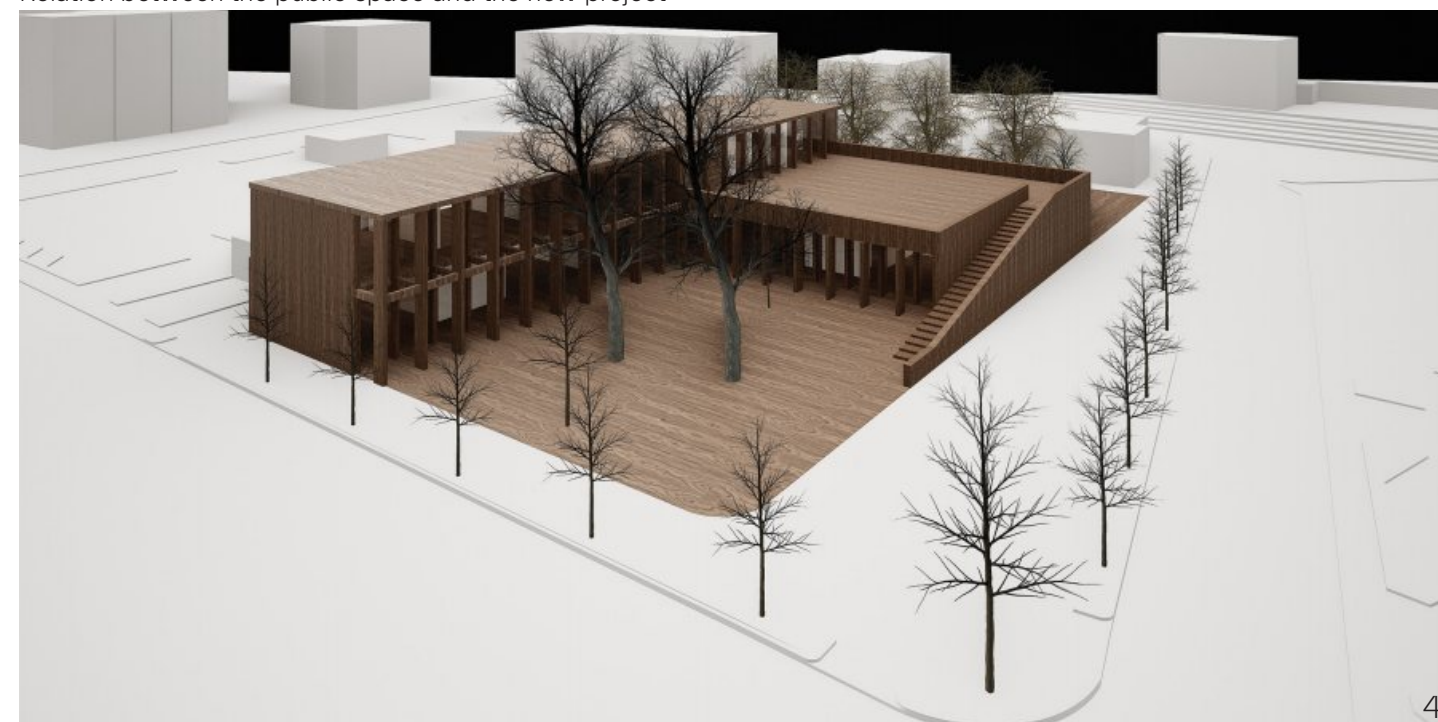


The competition goal was to replace the old kindergarten with a new one, preserving the existing trees and ensuring green areas. The project consists of two levels. On the ground floor there are the kindergarten classrooms, connected directly to the two gardens. The ground floor hosts also the necessary functions to be reached easily, such as the infirmary, cafeteria and two lounges for play activities. The upper floor houses the remaining functions, without tracing the entire volume of the ground floor, but on the contrary, taking advantage of part of the roof as a walkable roof garden, accessible from the outside by an external staircase connecting the two green planes, i.e. the lower floor garden and the roof garden. The choice was not to create a clear division from the rest of the city, but to leave the garden-forest "open," immediately accessible and without fences, so as to give the children the feeling of entering a forest, a Fairy Tale. The technical service rooms were arranged in the basement, with independent access at the back. The structure is composed by wooden beams and pillars, which with its modularity, creates a scan on the fronts in such a way as to create an open-covered portico in front of the children's classrooms.

Axonometric exploded view

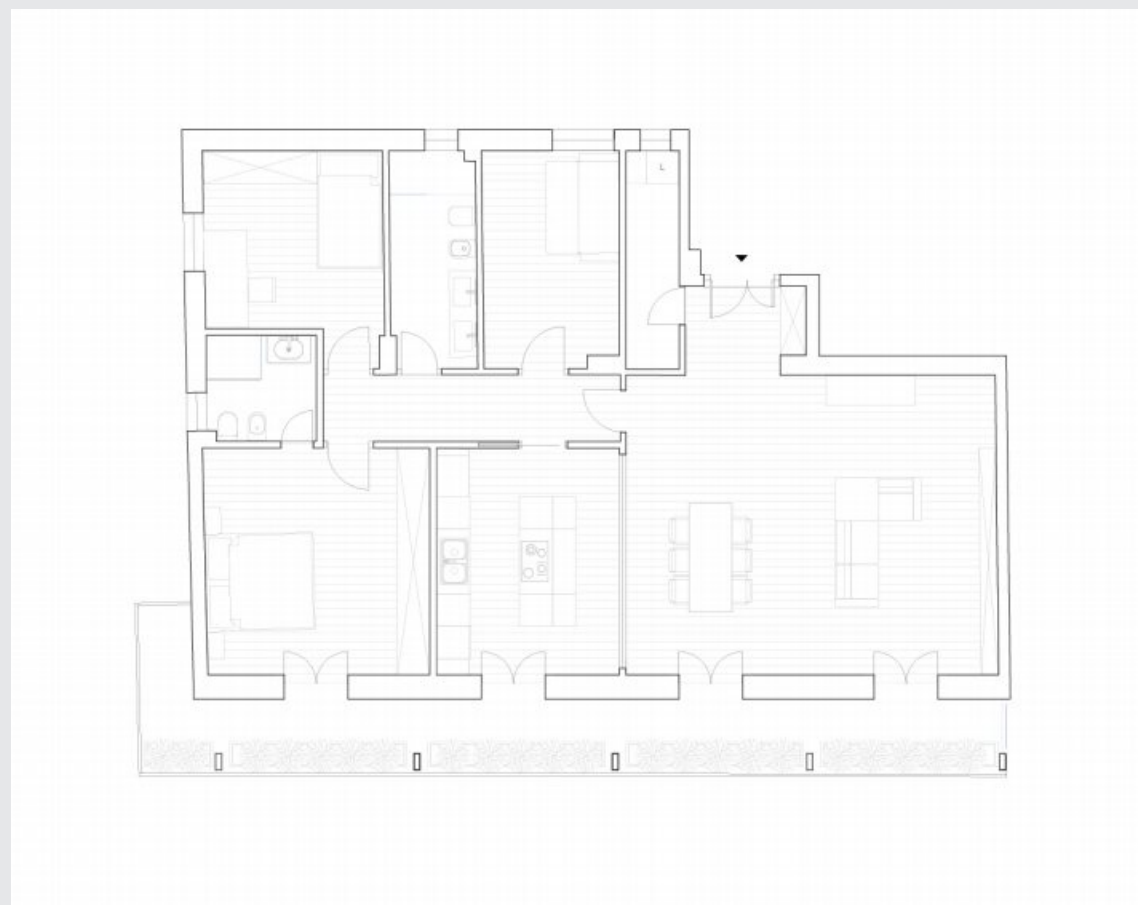


Relation between the public space and the new project

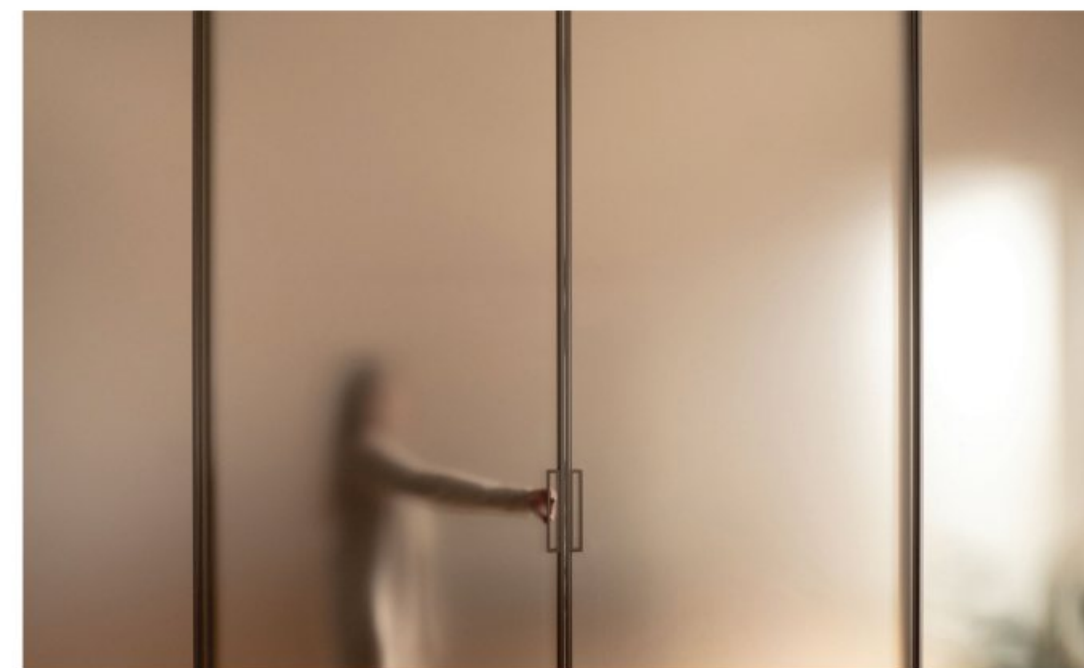


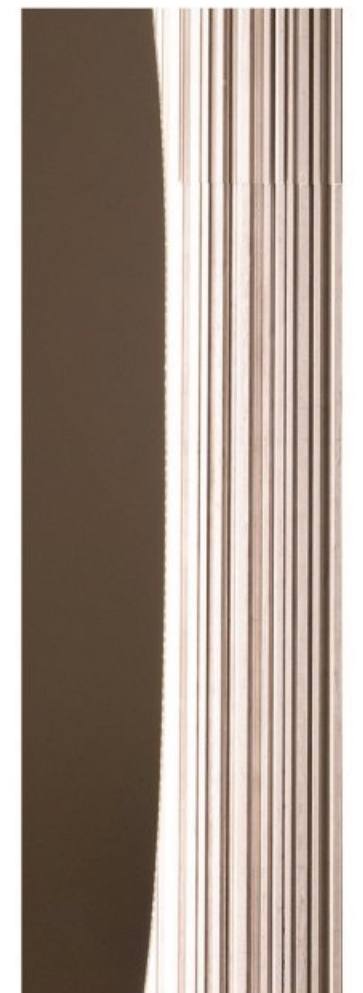
Interior AP

Interior Design Project - Completed



The apartment is located in a building in the heart of Salerno. The original division included four separate rooms at the four balconies overlooking the South side of the building. The interior design project removed the partitions between the entrance and the first two rooms, so as to create a single “living” room, communicating with the kitchen. The original location of the kitchen was on the opposite side of the flat. The kitchen was therefore moved toward the living area, so as to put it in direct communication with the living room. The division between the new kitchen and the living room is provided by a large 2.60-meter-high glass door with four sliding doors. In the entrance area, a “coat closet” space and a laundry-storage room have been created, hidden by a flush door. The bathrooms are in their original position, and the bedrooms are close to them. The entire apartment, with the exception of service areas, is floored with Oak parquet, with Italian herringbone laying. The Master Bathroom is covered in natural stone. The second bathroom, connected to the main bed-room, is decorated with a specially designed geometric wall covering. The color is taken from the walls of the bed-room, and the flush door opens inside introducing a blade of color.

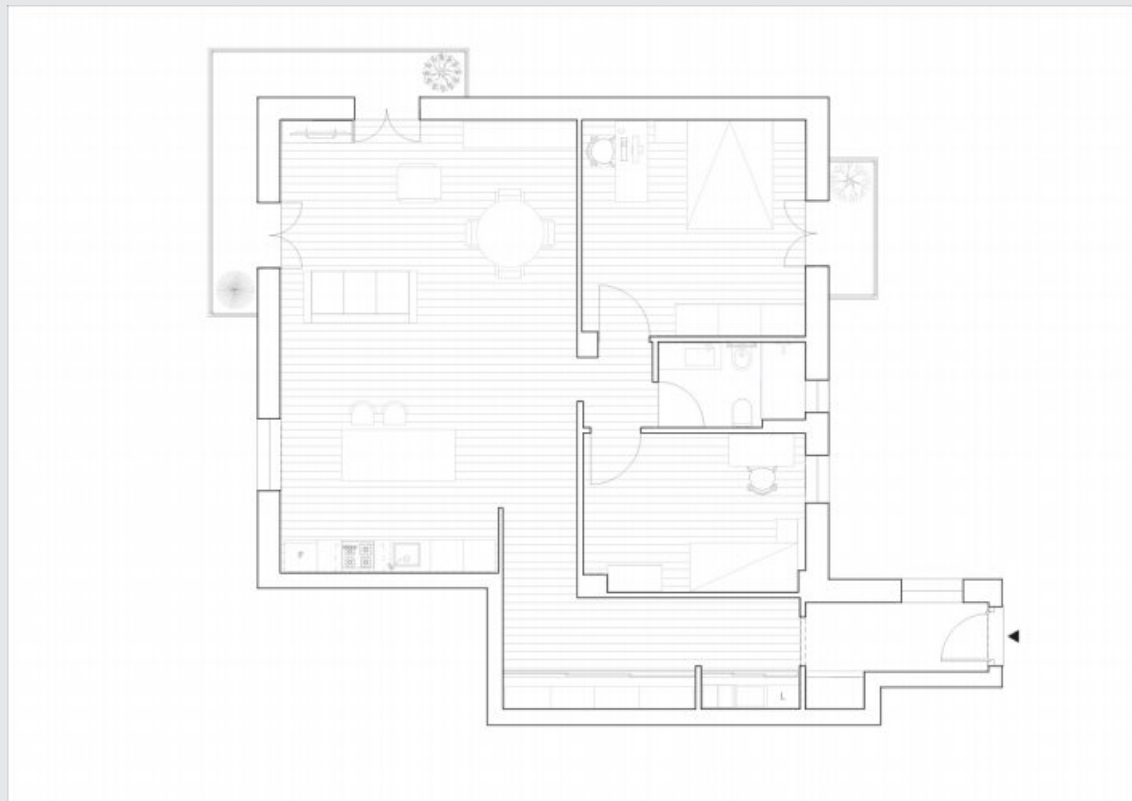




Interior RM

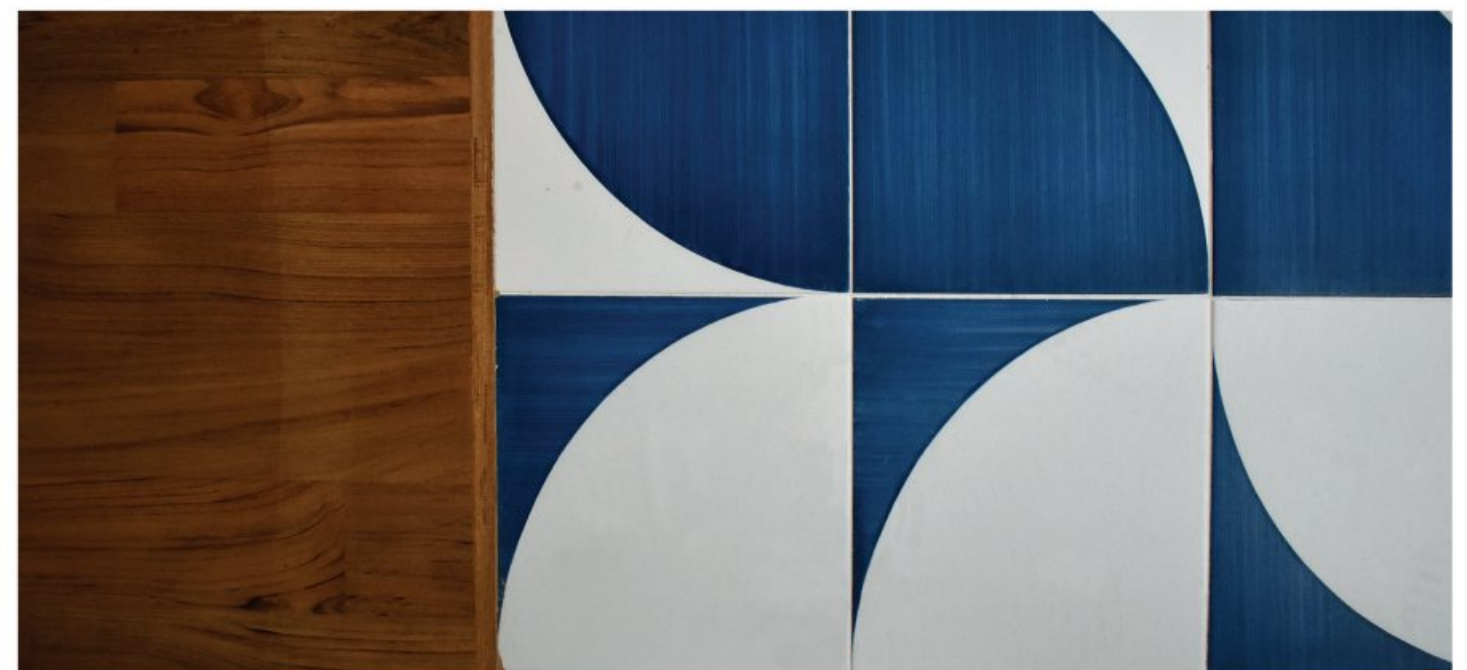
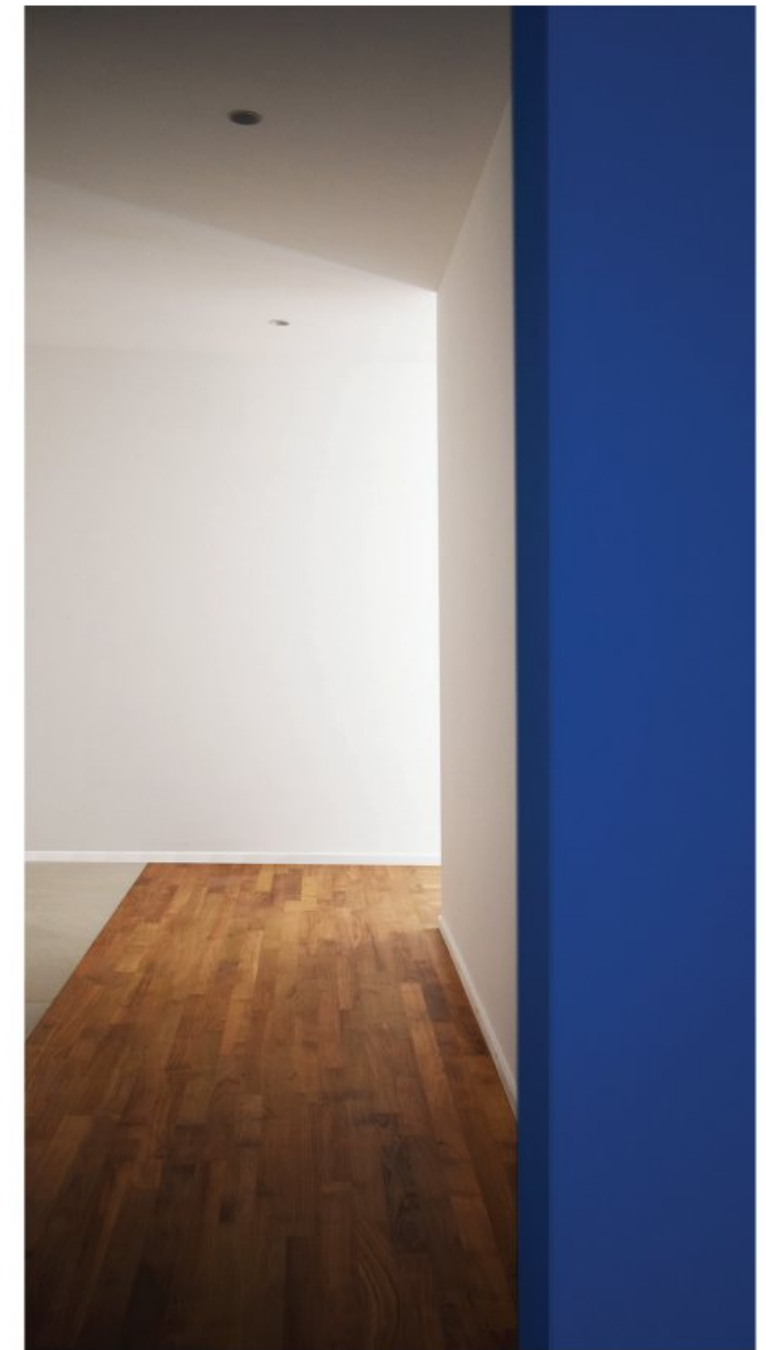
Interior Design Project - Completed

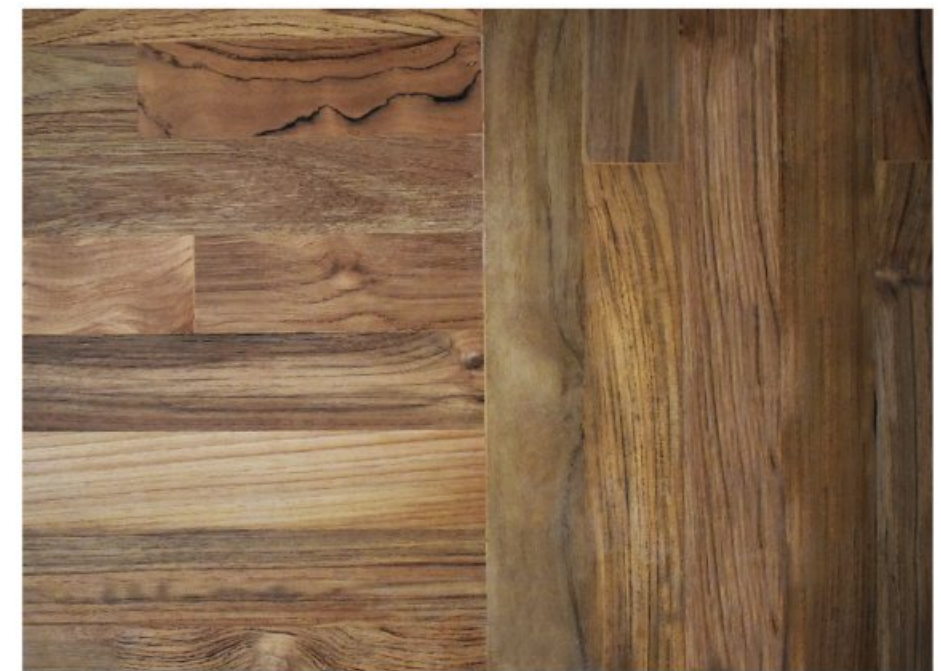
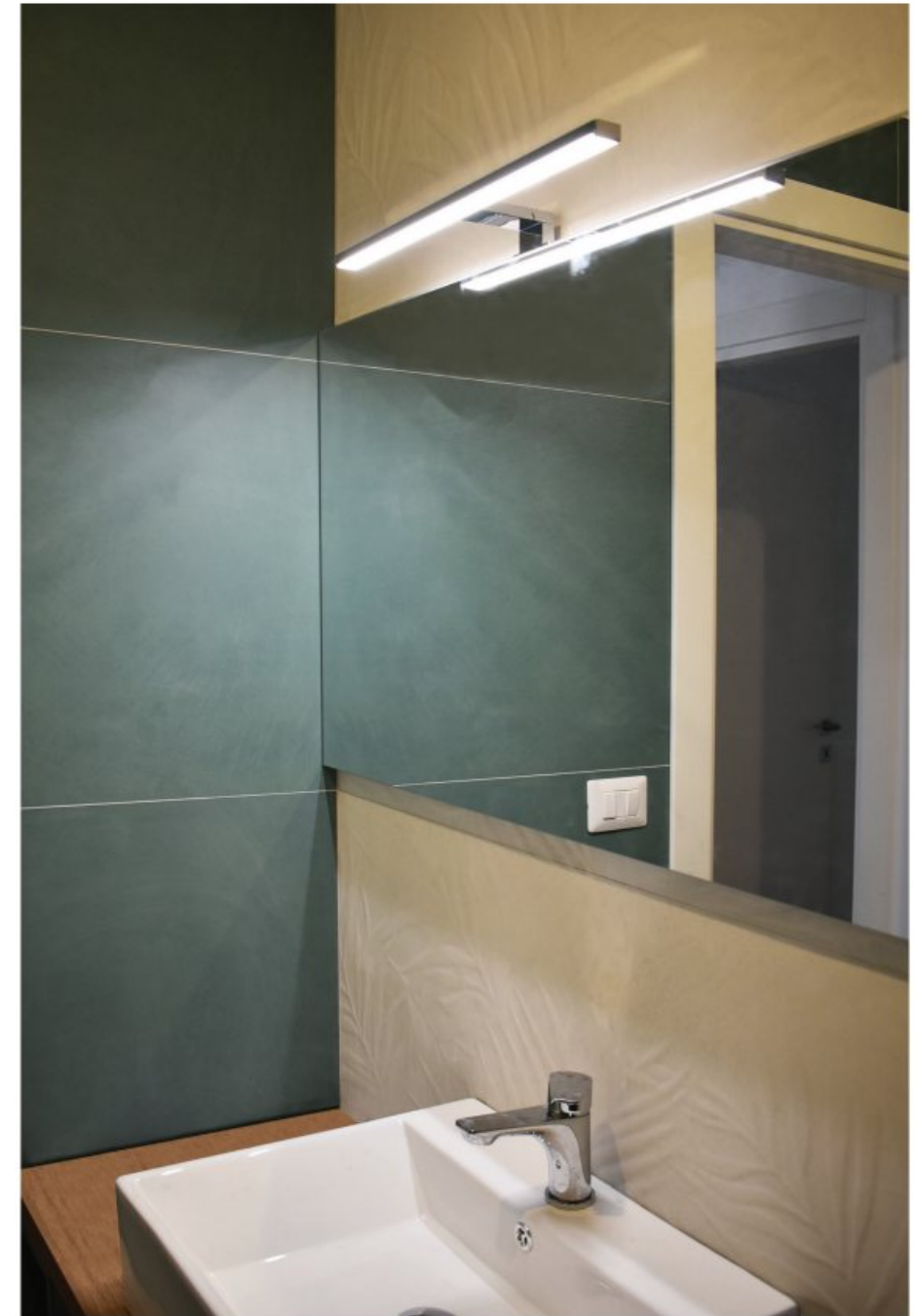




The apartment is located in a 1950' building in Salerno. At the beginning the apartment was divided into a long entrance corridor and four single rooms. The interior design project divided the long corridor into a first entrance room, separated from the next corridor by a full-height door. The following corridor was used to create a laundry and storage area. The first two rooms, as well as the brightest rooms in the house, overlooking a green park and facing South-East, have been combined into a single kitchen+living room. The two remaining rooms, both facing North, have been used as bedrooms, leaving the location of the bathroom in its original place. The entire apartment, except for service and entrance areas, is floored with Teak Masselo, with running warp, changing direction in each room and "weaving" the laying. The entrance area was characterized by the choice of a blue band that paints the ceiling and the two opposing walls. The choice of blue was also emphasized by the geometric flooring arranged like a carpet.

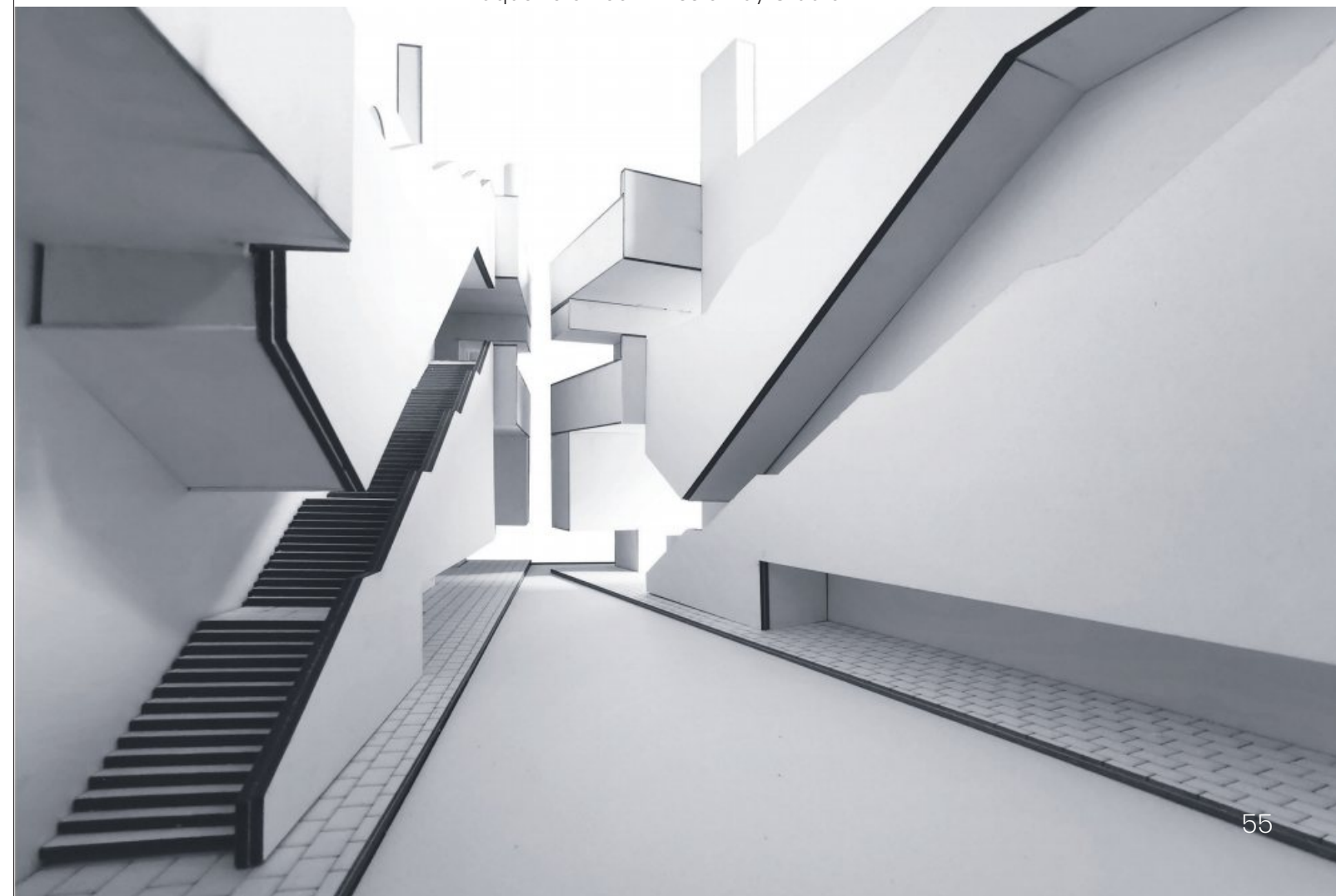
For the living area, a minimalist and modern kitchen without wall cabinets has been chosen to use a geometric "Bauhaus"-style wall covering, that decorates the living area like a painting.

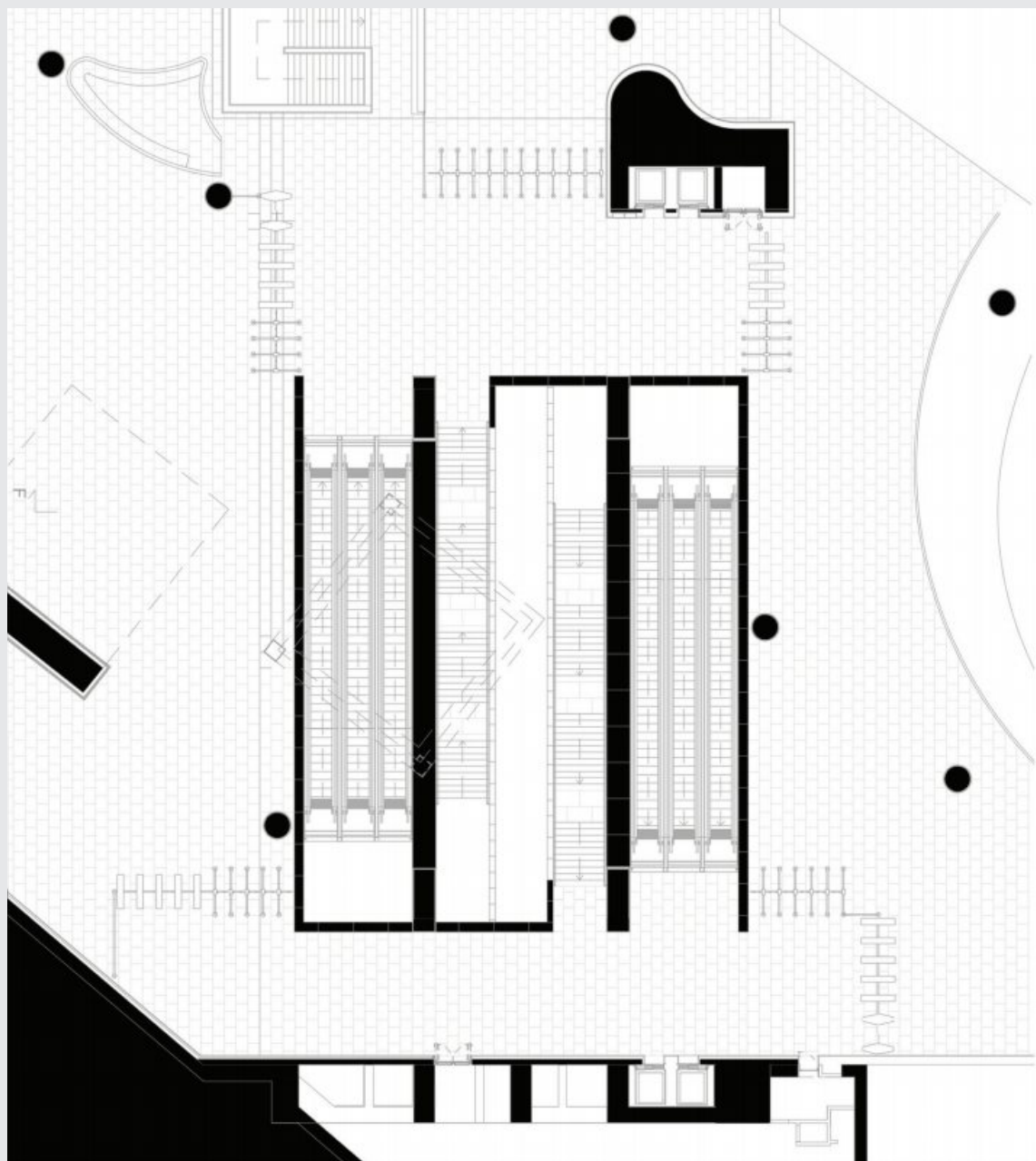




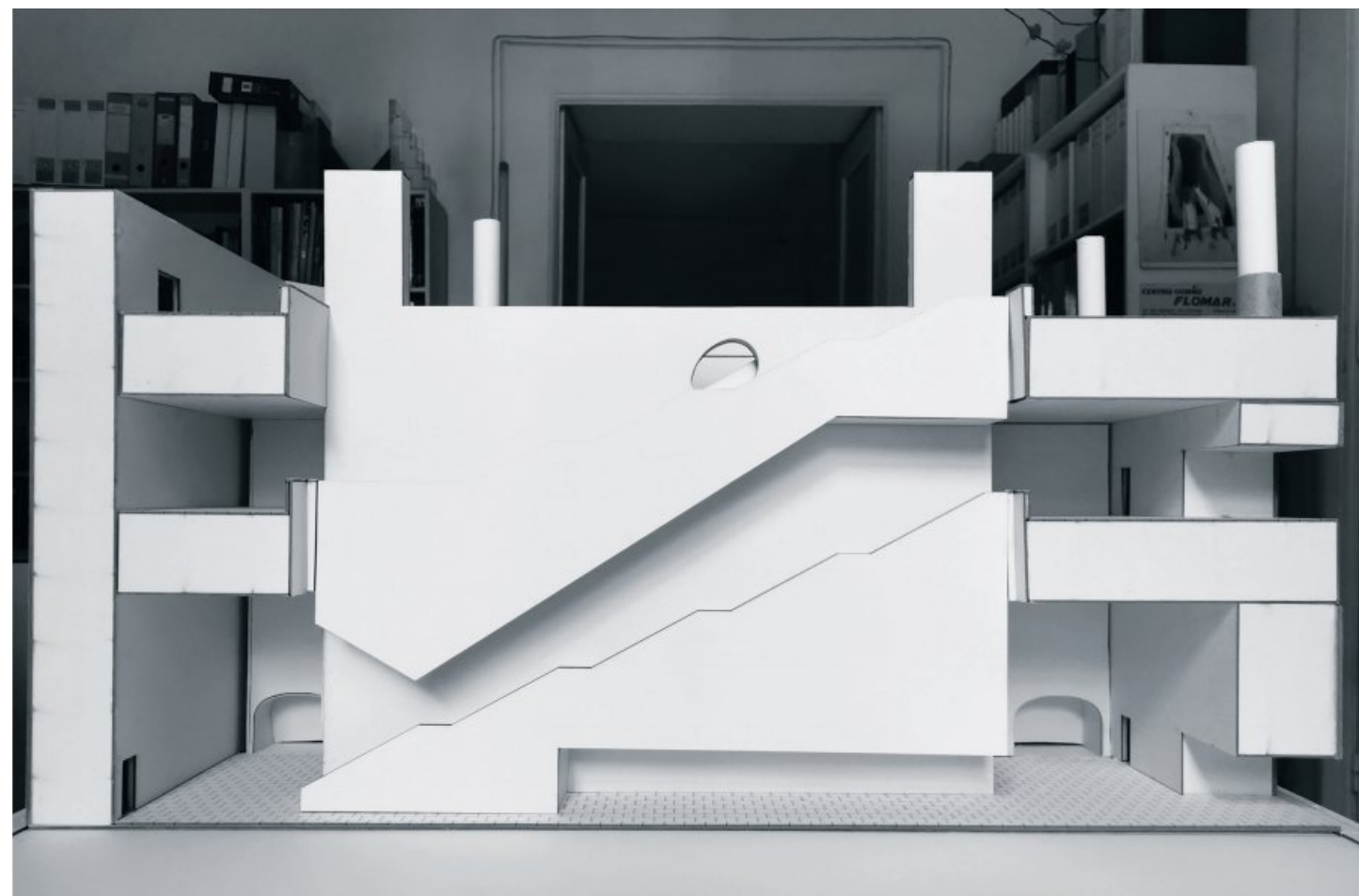
Piazza Municipio Subway station by Álvaro Siza + E. Souto de Moura

Maquette on commission by Studio DAZ





The project by Portuguese architects Álvaro Siza and Eduardo Souto de Moura includes a single large interchange between two subway lines, Line 1 and 6. The area incorporates and showcases the archaeological remains of Greco-Roman Naples discovered during excavation work. The model, requested by the MN company, in order to analyze the connecting between the upper square and the underlying train access area, is characterized by the presence of staircases and escalators that connect the different floors in opposite directions, creating a play of pure volumes that articulate the descent space. The need to better analyze the articulation of the vertical connections led to the conception of the model as an element that can be disassembled into two halves, such as to show the interior, and then to close again and be joined by the plaza above that serves as the model's lid.

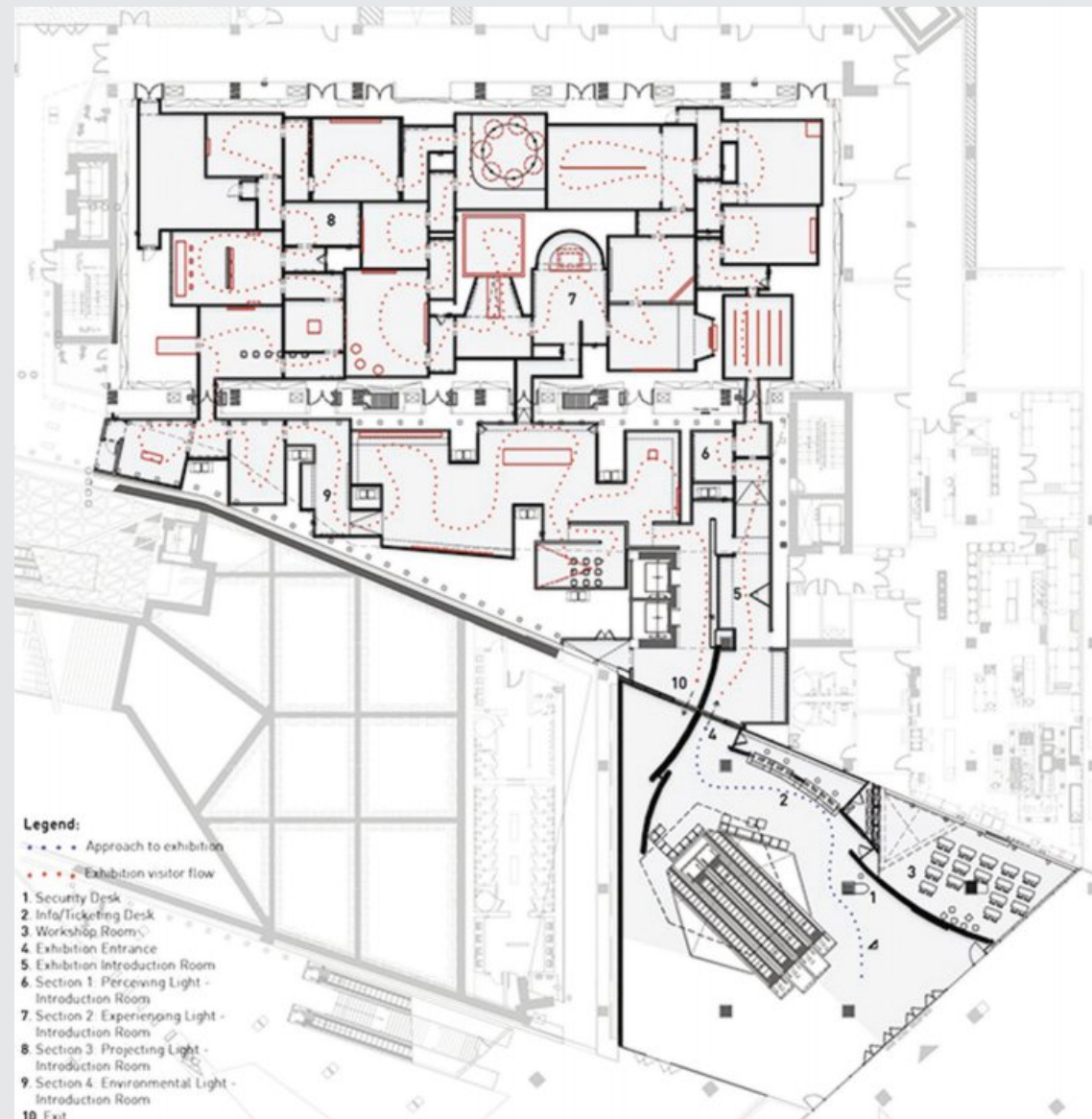




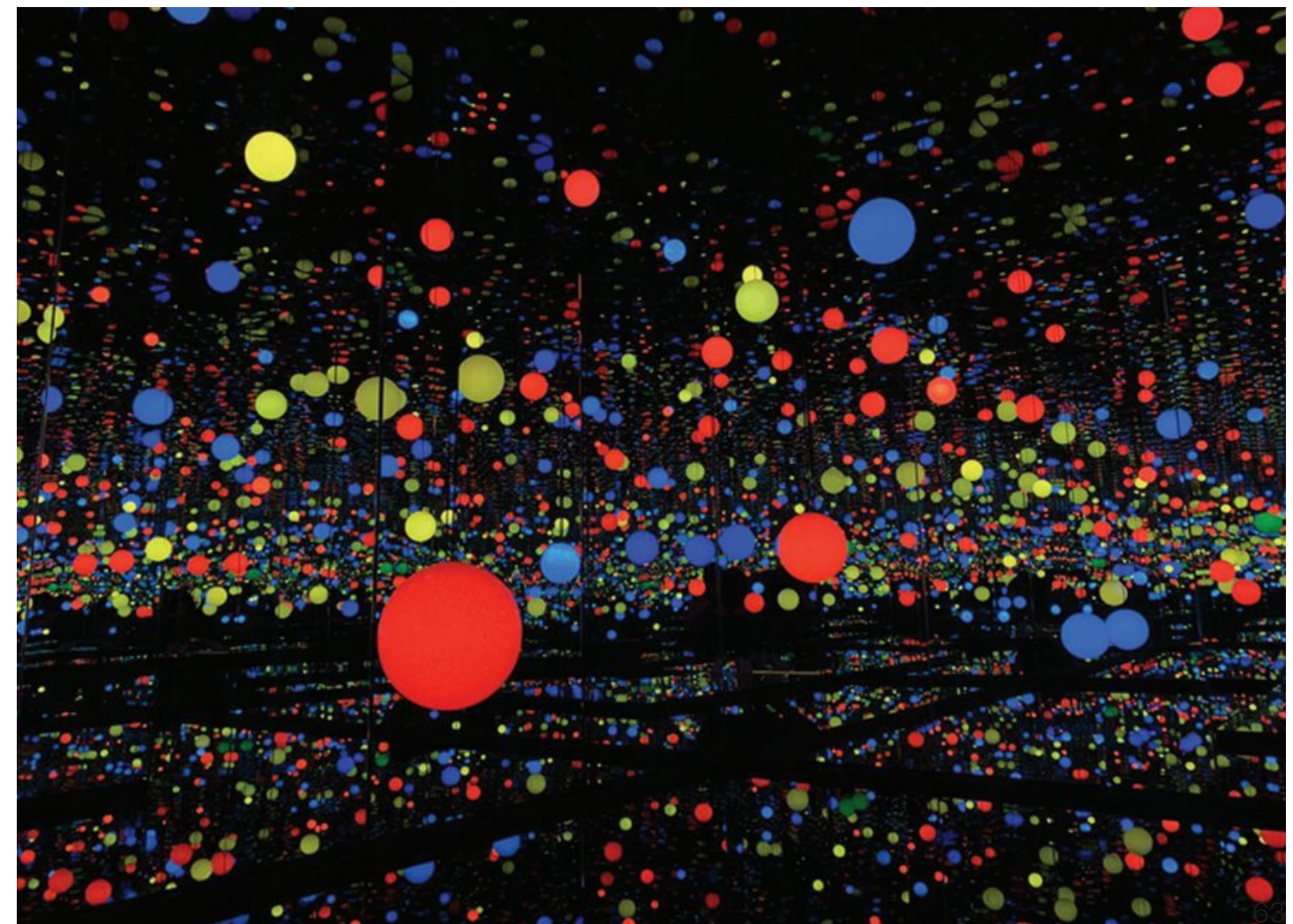
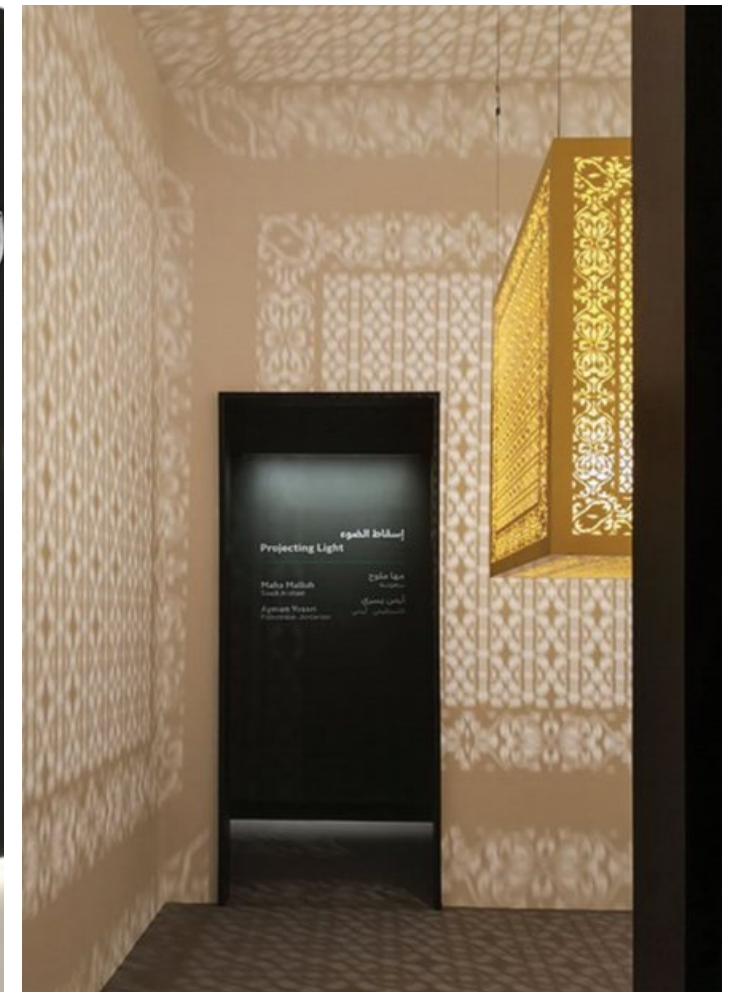
NOOR - “Light upon Light”

Riyadh Exhibition 2021 - Collaboration with Studio DAZ



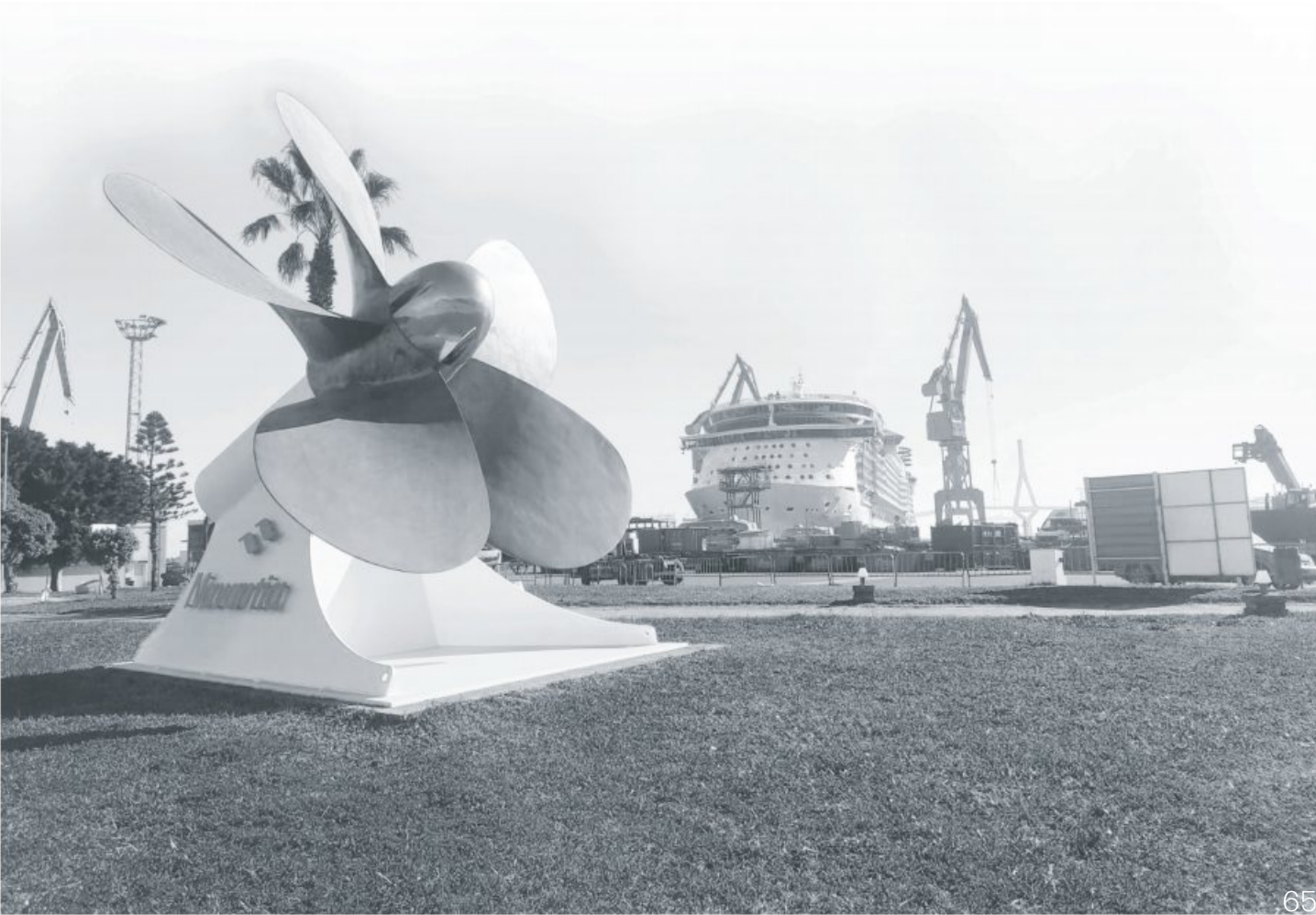


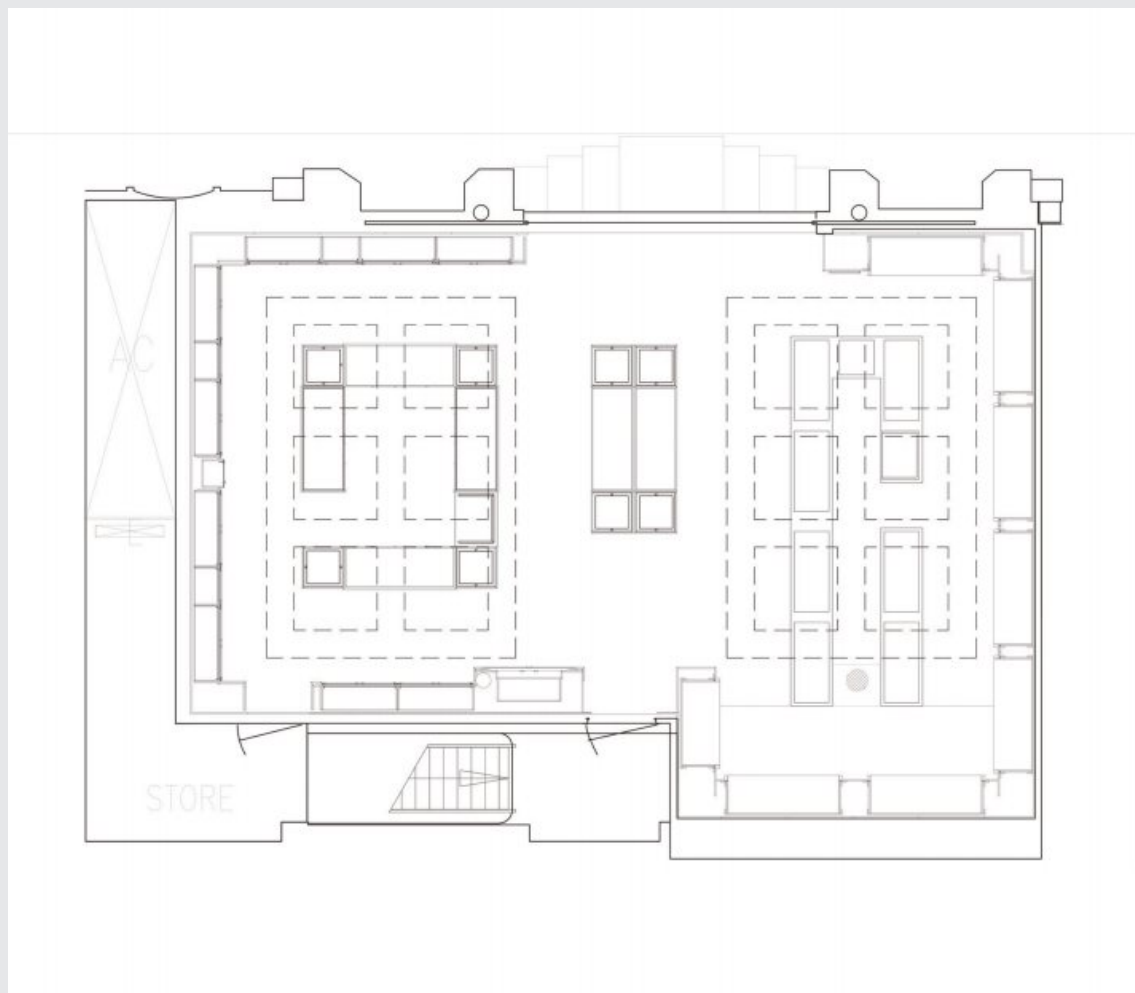
NOOR Riyadh is an art festival taking place in the Saudi capital with its first opening in 2021. StudioDAZ is the architectural firm in charge of designing the exhibition space and the art works placement, in collaboration with the curatorial group TheAims. The exhibition “Light upon Light,” which took place from March 2021, was the first contemporary art exhibition organized in Saudi Arabia. It featured works from the 1960s to the present. The principal artists were: Lucio Fontana, Yayoi Kusama, Urs Fischer, Nancy Holt, Julio LeParc, James Turrell, TeamLab, Daniel Firman, Leo Villareal, Ivan Navarro, Lara Baladi, Robert Irwin, Mary Corse, Keith Sonnier along with several Saudi artists. The exhibition space was designed as an alternating sequence of “filter” spaces and spaces in which to place art works. The alternation was also emphasized by the dual colors chosen, black and white, to emphasize the transition from light to dark and vice versa. There, where the works needed a light space, the filter was conceived dark. There, where the works needed darkness instead, for example for projections or for the installation of luminous monitors, then white filter spaces were placed at the entrance and exit. The path is not linear: on the contrary, it is designed as an exploratory sequence capable of surprising the viewer, because of the unpredictability of the spaces.



MSC + Royal Caribbean retail

Collaboration with Studio DAZ





The project presented here, the “Fashion Jewelry” on the Royal Caribbean ship - Independence of the Seas, is just one of the many projects developed and realized in collaboration with Studio DAZ.

The studio has been involved in the design and implementation of cruise ship interiors for years, especially dealing with projects for MSC ships, the latest of which was carried out on board “Euribia” ship.

Collaboration with the studio consisted in the development of 3D models, the development of final and executive drawings, and even the design of Crew areas. This work is completed by material and color research, through the creation of Moodboards panels.

The collaboration has been enriched with on-site supervision during the Dry Dock periods at the shipyard.

From January to February 2023 the on-site supervision dealt with the interiors of the ship “Royal Caribbean - Independence of the Seas” at the Navantia shipyard in Cadiz, Spain.

In May 2023, on the other hand, work was carried out on “MSC - Euribia” ship, at the Chantiers de l’Atlantique shipyard in Saint-Nazaire, France.



Jewellery interior on Royal Caribbean ship - Independence of the seas : demolition phase

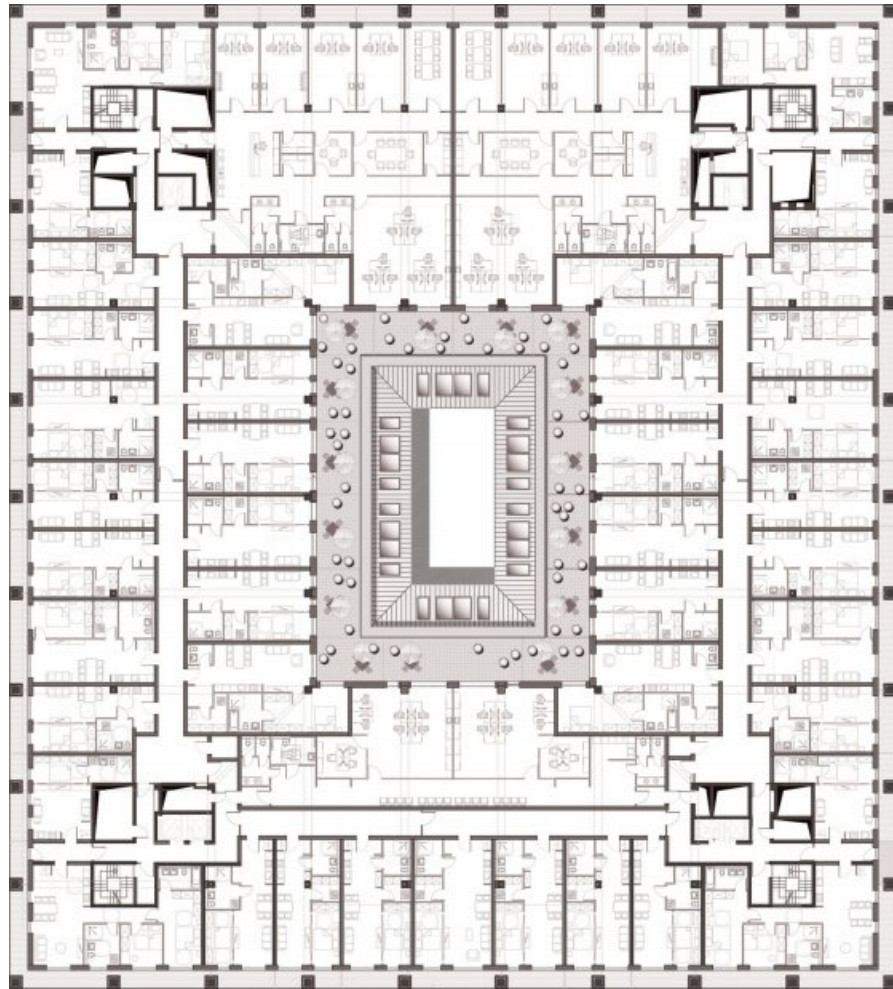
Jewelry interior on Royal Caribbean ship - Independence of the seas : final result



Housing Köln

Collaboration with Studio DAZ + Adler Bauprojekt





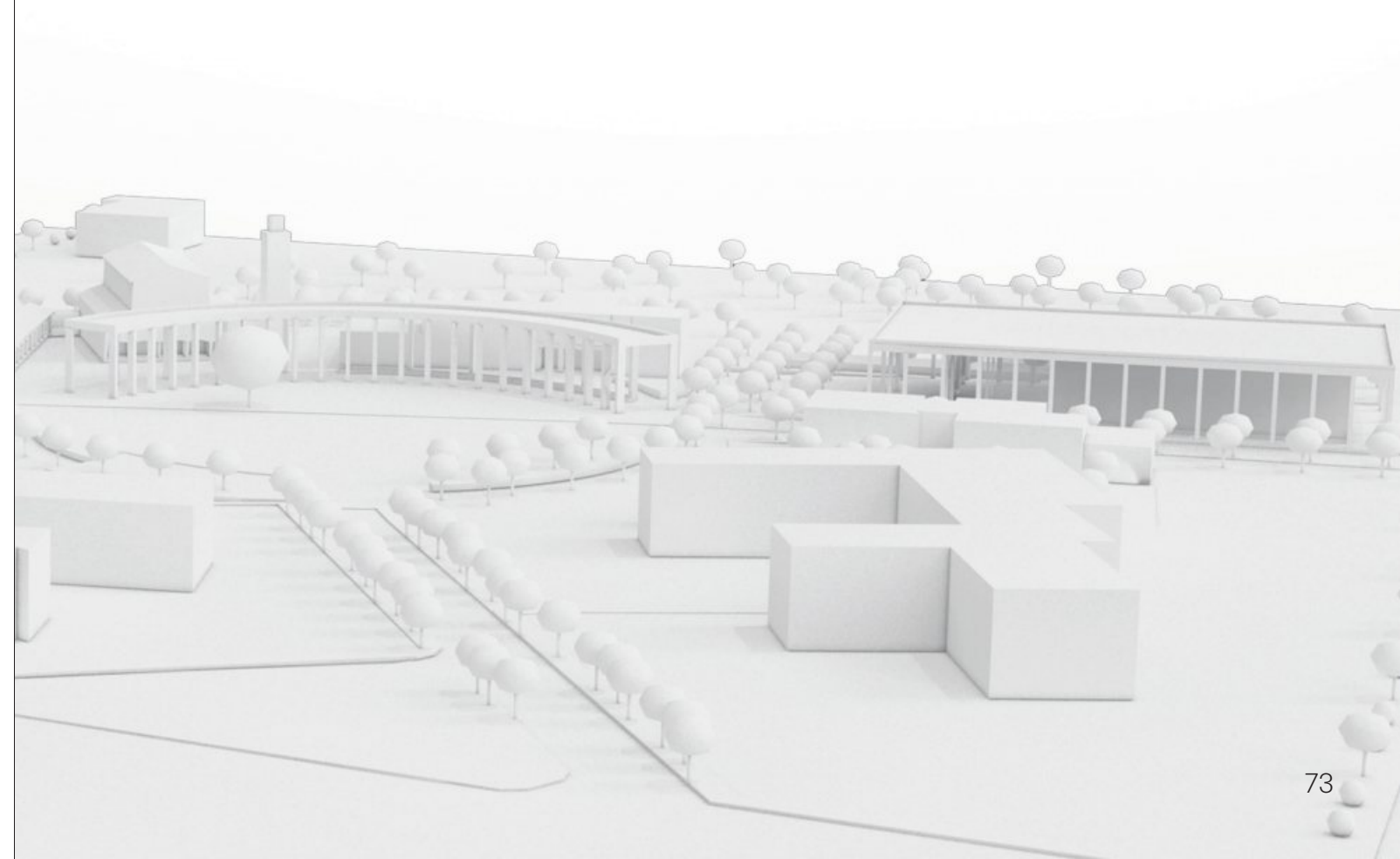
The “Housing - Köln” project concerns the conversion of the former Cologne Central Post Office building into a residential building. The building consists of 6 floors above ground and 3 floors below ground. The project covered the entire building complex, defining the floors of underground parking, ground floor services and residential units from the second floor to the top. Residential units of different sizes were designed, starting from a small module. The central courtyard of the building was converted into a garden overlooked by the balconies belonging to the residential units. The design respected the original façades, updating the choice of materials on them. The plan shown here refers to the second floor of residential units, i.e., the smallest type. The collaboration with StudioDAZ and Adler BauProjekt involved drafting the entire final design. The collaboration led to spending a year between Naples and Frankfurt, at the headquarters of Adler BauProjekt, to develop the project.



View toward the inner courtyard

New centrality in Piazza Santini

Competition with CARLOCUOMOASSOCIATI





The theme of the competition was “Redevelopment and enhancement of the urban space of Santini Square.” This went through defining “place” as a civic space, immediately recognizable by citizens and as an attractor for tourists. Connecting all the existing public spaces such as green areas, parking lots, roadways and widenings with a single large circumference of about 85 mt in diameter, a square with a total area of 5500 square meters was designed. The location, shape and size were defined without expropriation, without demolition and without trauma, making the project immediately and practically feasible. Along the new square, a tall and deep 700-square-meter portico was planned. The new cine-theater was planned isolated, preceded by a small, more intimate plaza, in a green grove of *Metrosideros Excelsa*. The new cine-theater is on two levels. On the Ground Floor there are the hall, stage, and lobby with related services. On an upper level, also in the same volume, are the projection rooms and corridors for stage equipment. On the first basement level there are dressing rooms, storage rooms, under-stage and toilets for spectators. On the second basement level is a large public covered parking lot. The levels of the cine-theater building were connoted by a portico protecting the entire building. A first glazed envelope protects the lobby and interior ramps, and a second stone envelope encloses the performance hall.



Model top view

View toward the central square

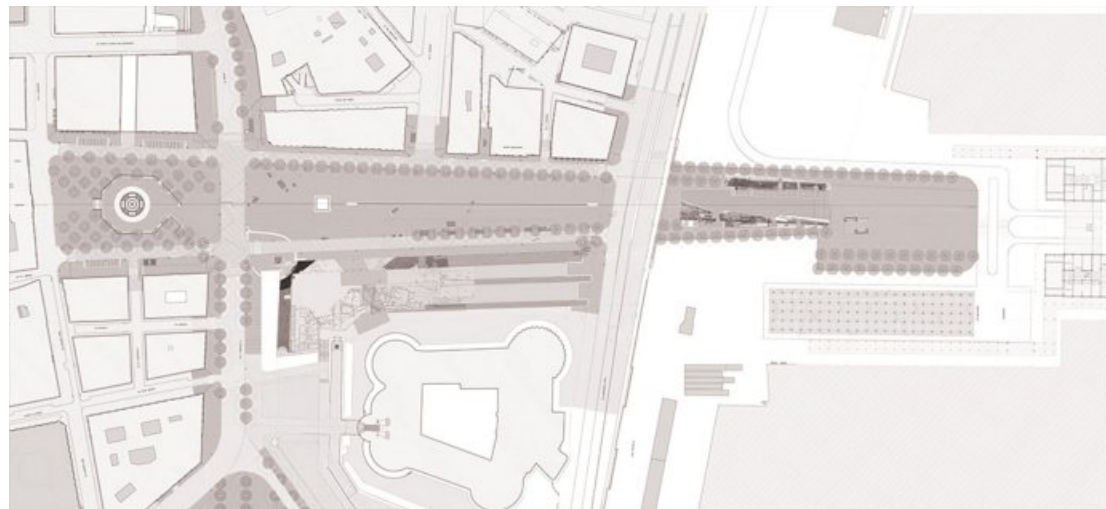
View toward the new cine-theatre



Piazza Municipio Subway Station by Álvaro Siza + E. Souto de Moura

Collaboration with Studio DAZ + Internship





The new metro station in Piazza Municipio stands next to the ramparts of Maschio Angioino. The design project redesigned the urban space, creating a visual axis of direct connection between the Maritime Station and Castel Sant'Elmo. The design of a long slit on the square emphasizes this line of union. This slit also makes it possible to enjoy the view of Castel Sant'Elmo from the underpass. The pedestrian plaza is actually a cover for the underpass area below. The Neptune Fountain, located at the opposite end from the Maritime Station, is the other landmark toward which the central axis tends. During the excavations works, archaeological finds ,dating back to both Greek and Roman times, were unearthed. These findings gave rise to the idea of creating a real archaeological park attached to the subway station, which is still under construction. The opportunity to carry out the internship at the Underground Station was an opportunity to take part in on-site meetings with Álvaro Siza and to closely follow the executive design choices that were made during construction. The internship was followed by collaboration with Studio DAZ for the drafting of the design drawings in the executive phase.



Construction site: creation of the square cutting

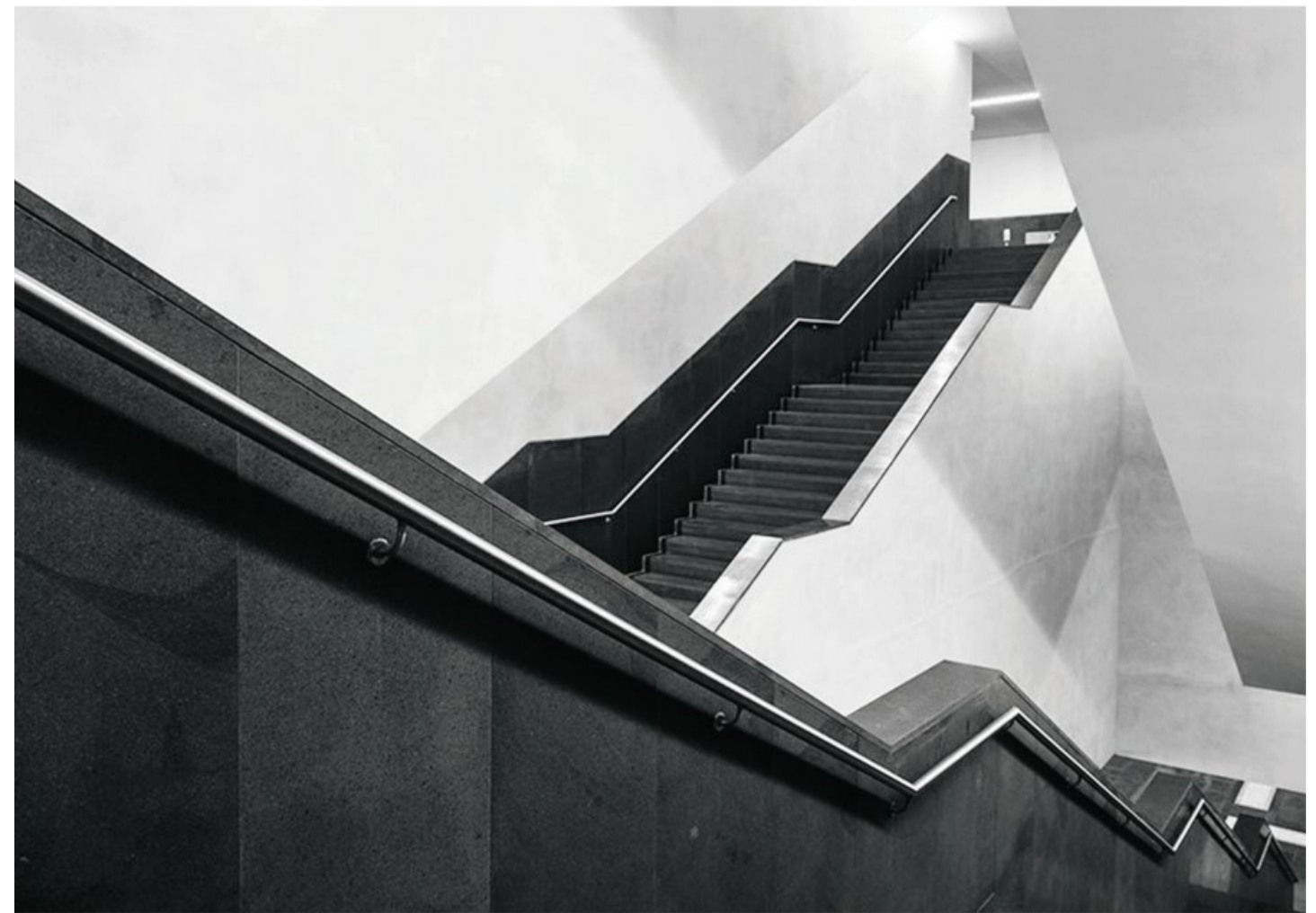
Meeting with Siza





Construction site: ongoing

Meeting with Siza



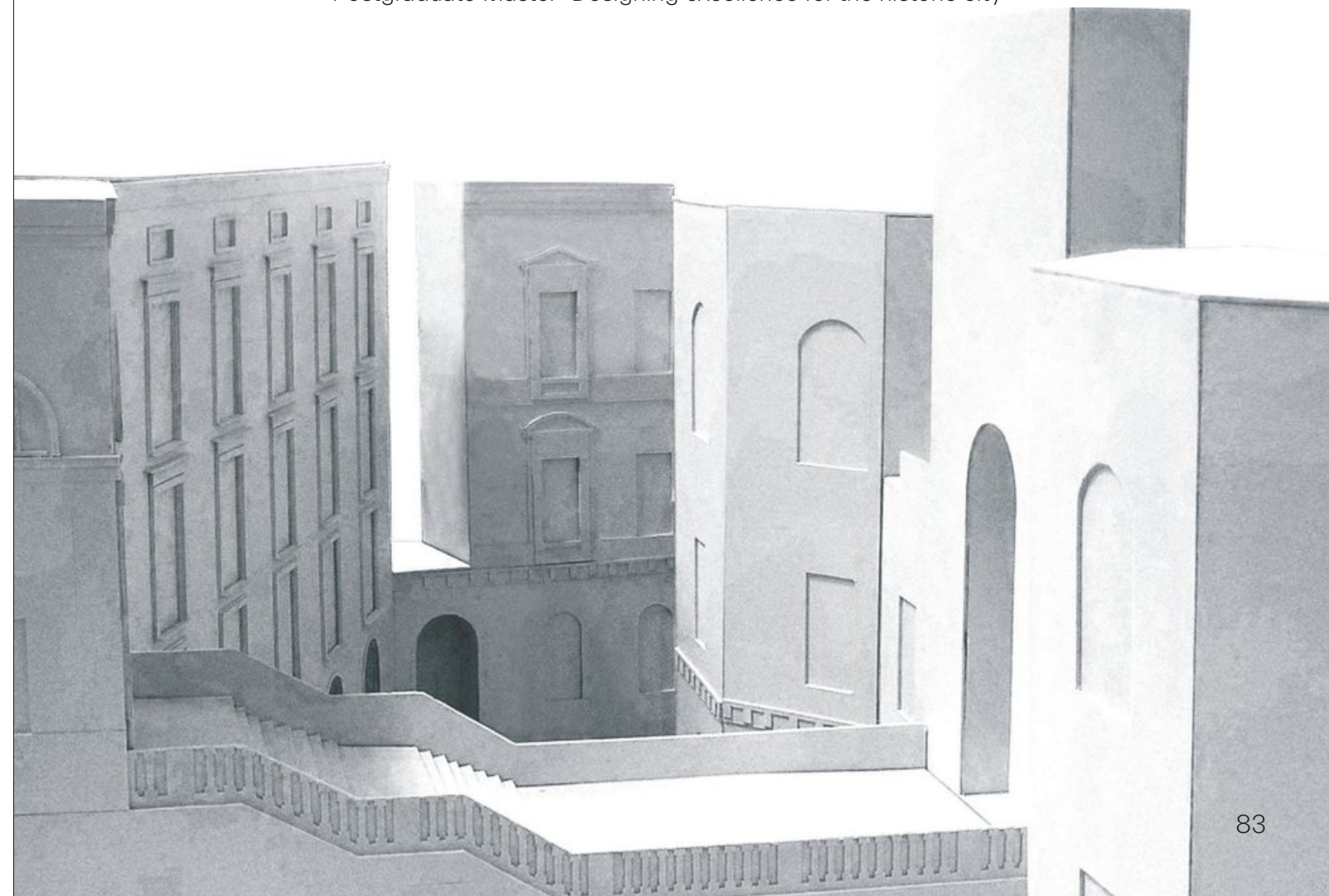
Staircase - pic by Giacomo Visconti

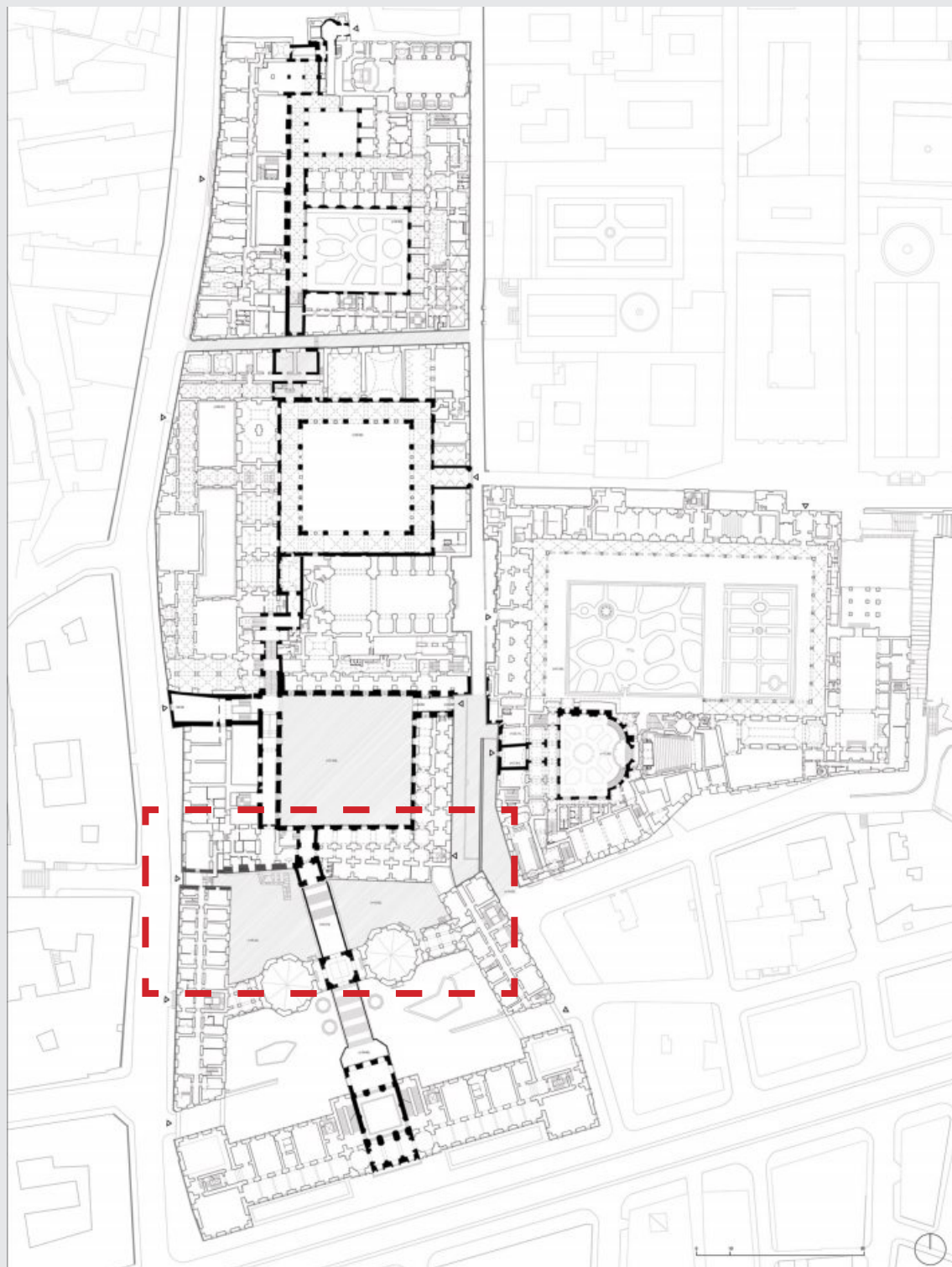
Subway Station - pic by Giacomo Visconti



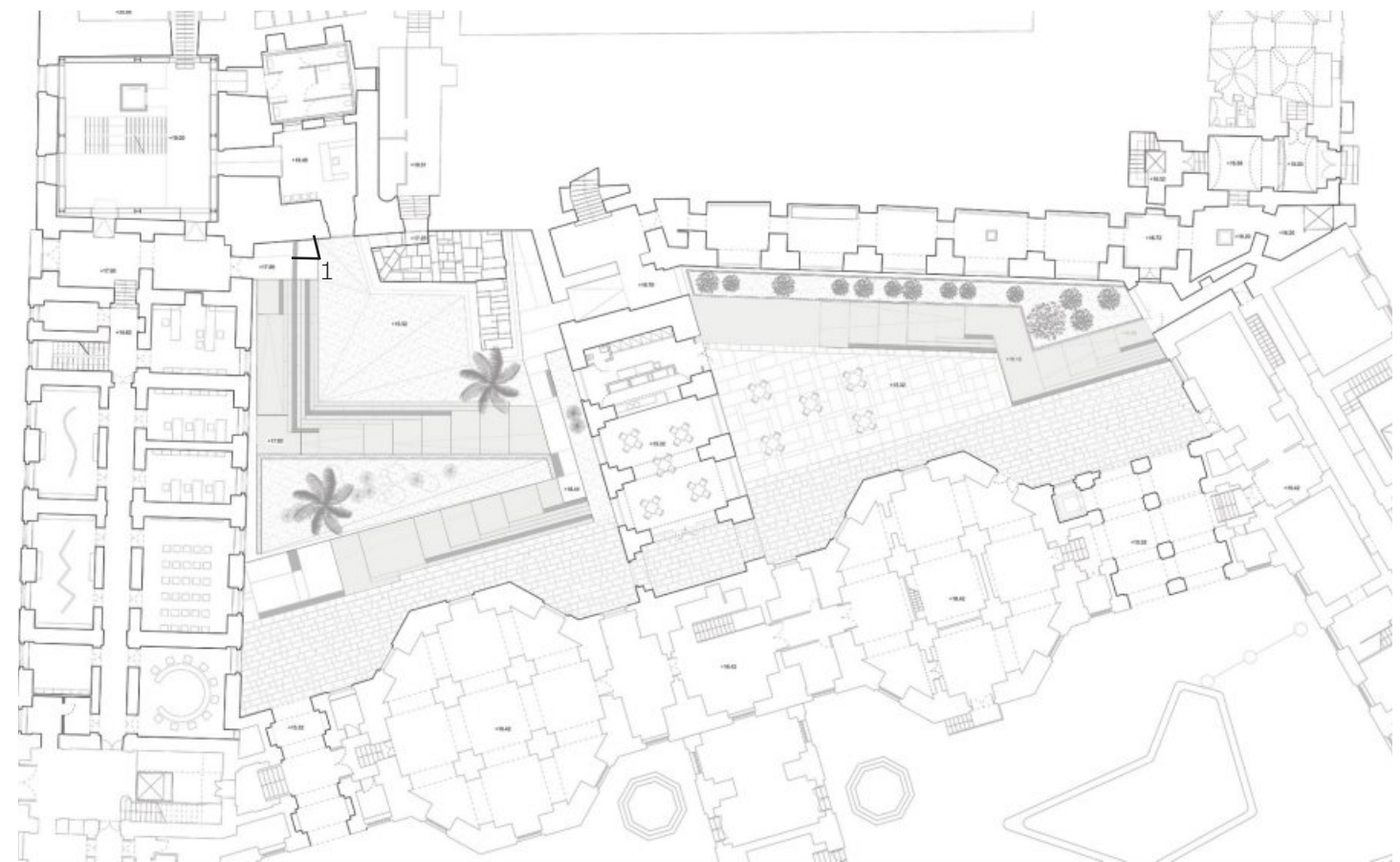
Archeology and connection

Postgraduate Master “Designing excellence for the historic city”





The Insula of Mezzocannone, which still houses the headquarters of the University of Naples “Federico II,” includes the project areas. One of the project themes was: the archaeological route. The courtyards are currently in a state of severe deterioration. One of them encloses within it an archaeological artifact belonging to the ancient Greek wall, and yet not enhanced. The other courtyard is occupied by a building body aimed at housing computer servers, making the space unusable. Overlooking the courtyards there is the degraded building that connects the Institute of Chemistry and the Southern area of the Insula. The project proposes to give new dignity to the courtyards and to reconfigure the volume that overlooks them. The project proposes to regenerate the old volume with an Auditorium space and a staircase body that connects the lower part of the University Insula with the upper part. The design project bring to life the courtyards, giving dignity to the ancient Greek wall. The project does not alter the state of the places, but aims, with minimal impact, to regenerate the spaces.



Ground floor - courtyards and buildings

View 1 - New volume among the historic buildings. Study model



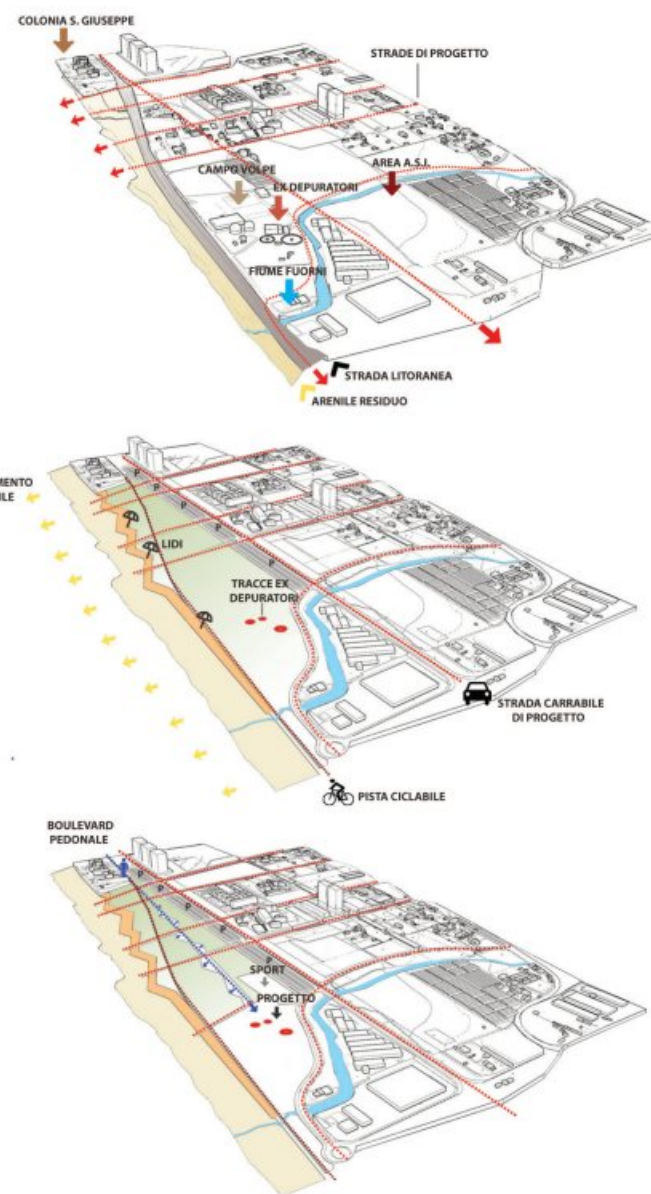
Salus per Architectura

Master's Degree - Architectur and Urban Design Project

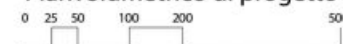




The project area is located in the Eastern part of Salerno (SA), between the new harbor of Marina d'Arenchi and the Fuorni river. The project develops on the area's coastline, which is currently degraded and abandoned, cut by a suburban road, and eroded by the tide. The project aims to redevelopment the shoreline, with the creation of a marine park, in accordance with the current Urban Plan, and the creation of a Wellness Centre in the building area destined for new constructions. There the remains of a former disused purification plants currently stand. The project extends the road crossings to the sea with walkways perpendicular to the shoreline. A long promenade inside the park connects the two opposite points of the project area. The beach nourishment hypothesis constitutes an opportunity to redesign the coastline, integrating it with public-use solariums and removable seasonal equipment. The traces of the old disused water purifiers are taken up in the project design and transformed into swimming pools. The new building completes the overall project. whose aim is to redevelop an area with a strong potential.



Planvolumetrico di progetto

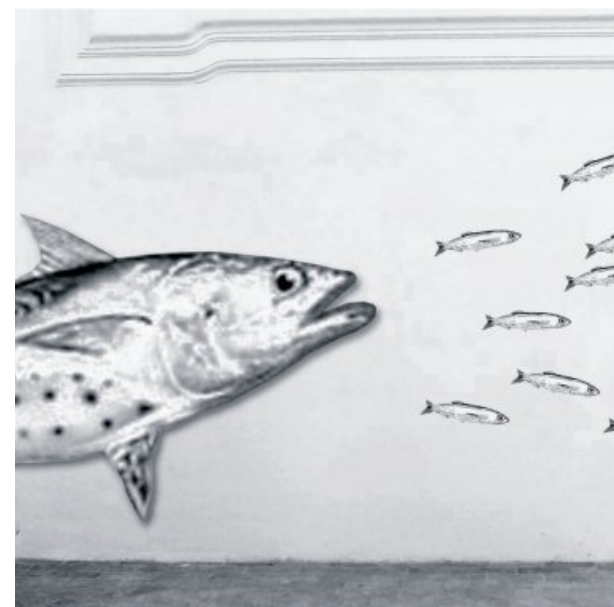


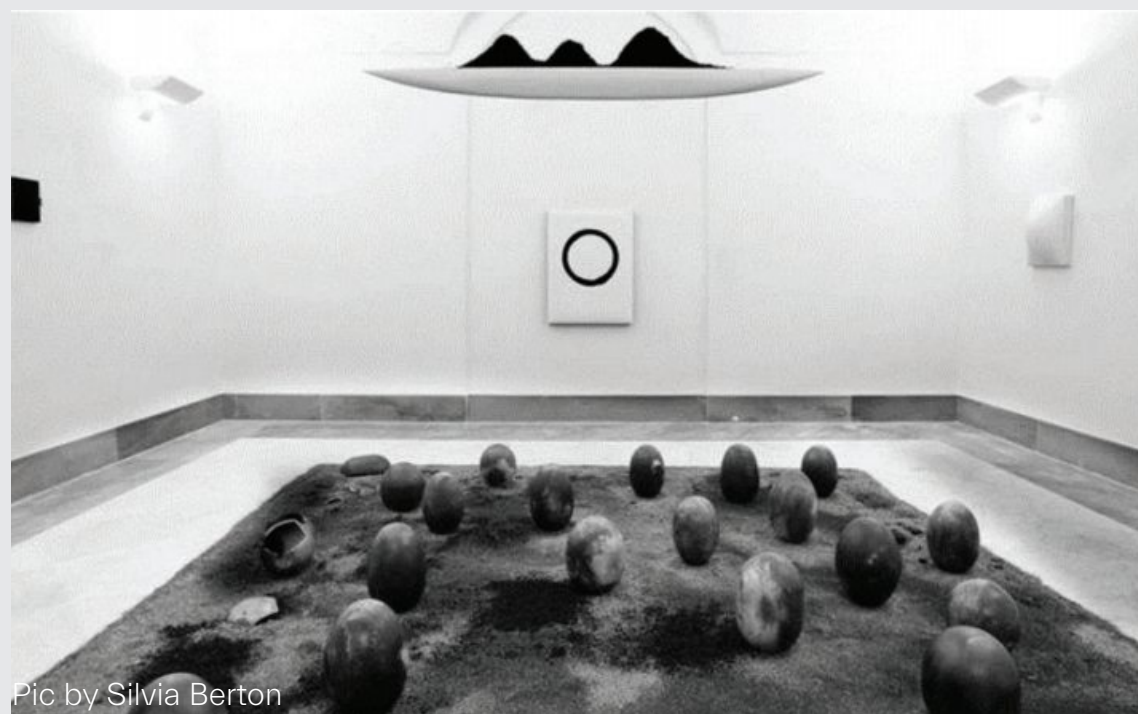
Sezione trasversale A-A



MANN

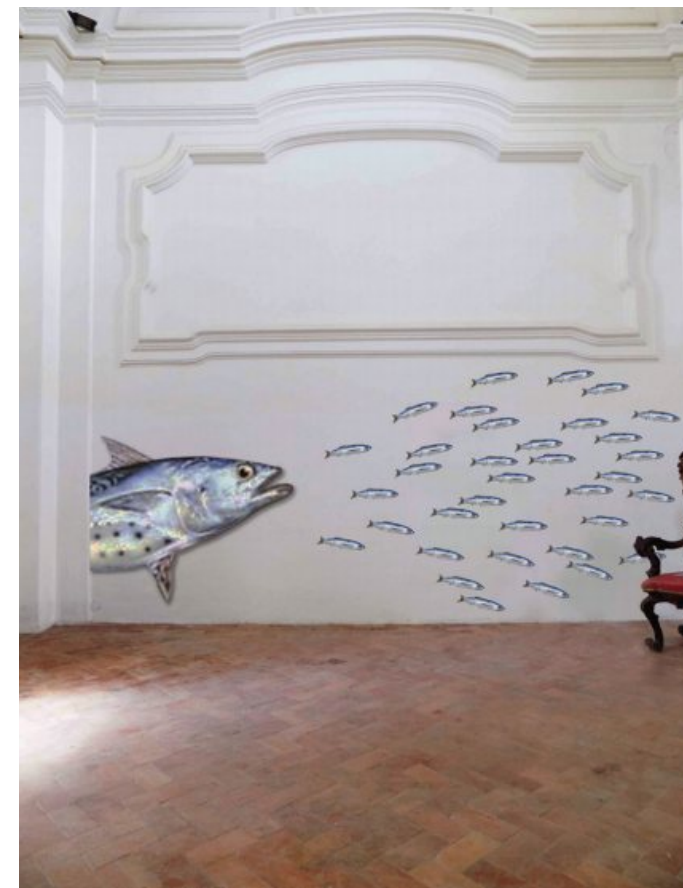
Internship



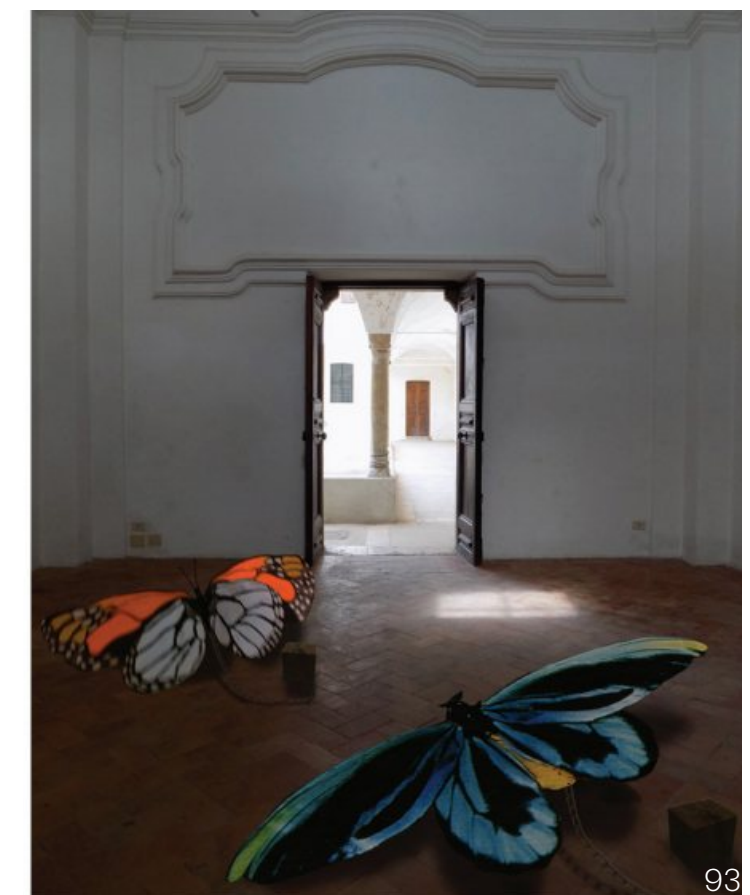


Pic by Silvia Berton

The Internship at the National Archaeological Museum of Naples gave me a significant contribution in terms of the experience and knowledge acquired. The internship consisted of taking part in the setting up of two contemporary art exhibitions, as well as taking part in the organisational activities. From the beginning, I was involved with the organisation of two exhibitions. I took part in the two preliminary meetings with the artists, whose goal was to choose the most suitable rooms for the arrangement of the artworks. The first event in which I took part was the setting up of Mats Bergquist's exhibition. The first organisation meeting took place with the presence of the exhibition co-curator Elena Dal Molin. It was followed by an intense week dedicated to the setting up of the works. The areas designated to host the artworks were the entrance hall, the Camellia Garden, which lent itself to hosting the Daruma, Japanese ceramic eggs derived from traditional votive dolls, and the room dedicated to temporary exhibitions, which would instead host a wooden ship surmounted by three piles of ash, recalling the typical shape of Vesuvius. Ash was a key element, already present in the title of the exhibition 'Ashes to Ashes. Encaustics'. The entrance hall was intended to accommodate two pieces designed to be composed together, the Milky Way and the Lintel.



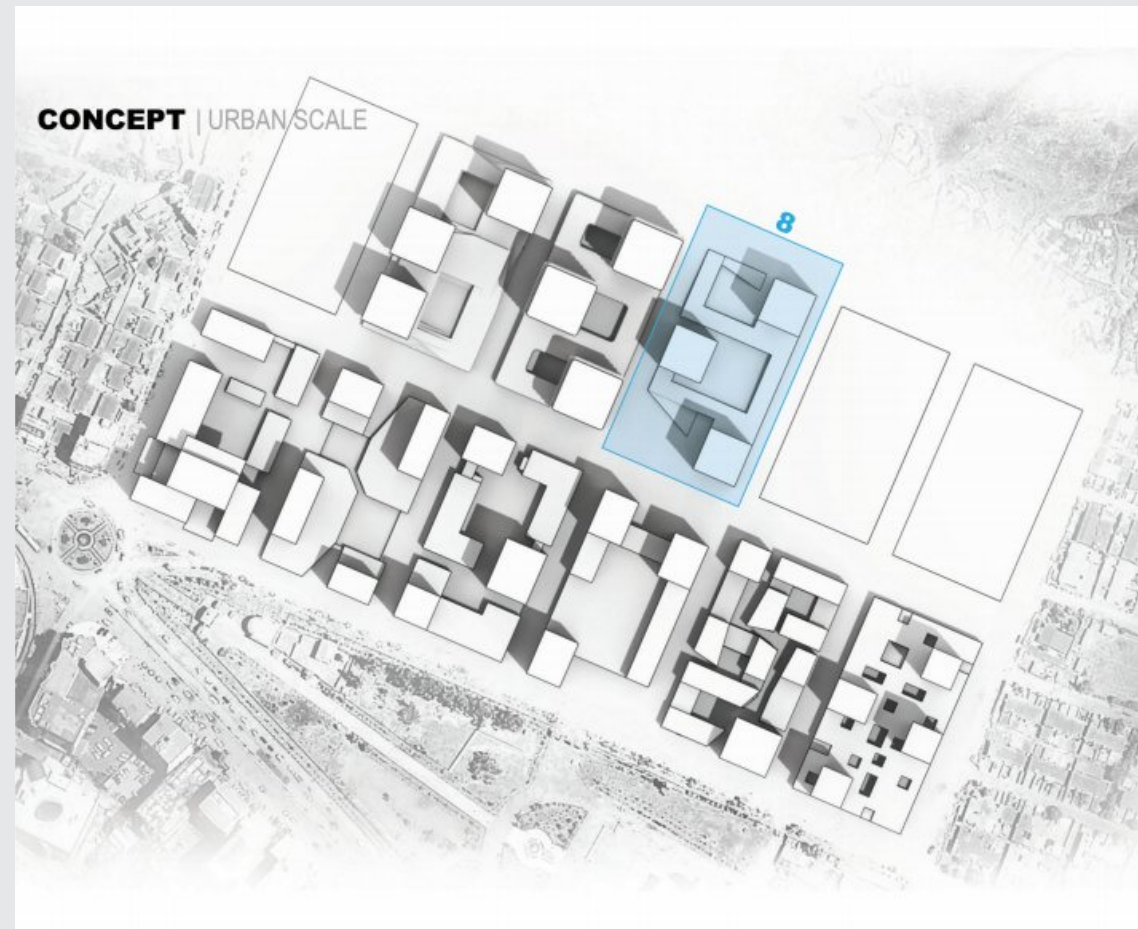
The second exhibition project in which I took part was 'Concerto per archi e fili d'erba' (Concert for Strings and Blades of Grass) by Carmine Rezzuti and Quintino Scolavino artists, curated by Marco De Gemmis and Patrizia Di Maggio. I received the commission to produce the renders and photo collages to insert in the catalogue. I was also commissioned to make an inspection on the exhibition site, in Capri island, to take the necessary pictures and check the measures of Chiostro Piccolo in San Giacomo Cloister. In the following weeks I made renderings of the works, according to the artists' requests and preferences.



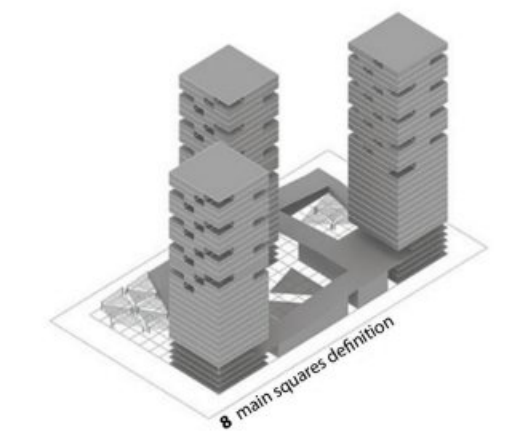
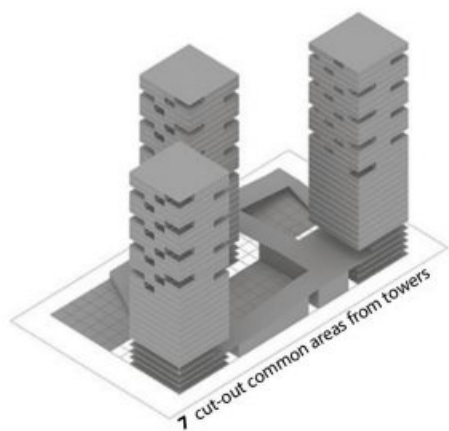
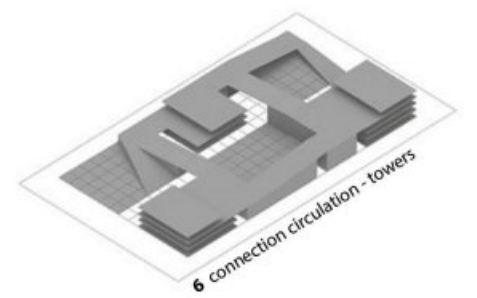
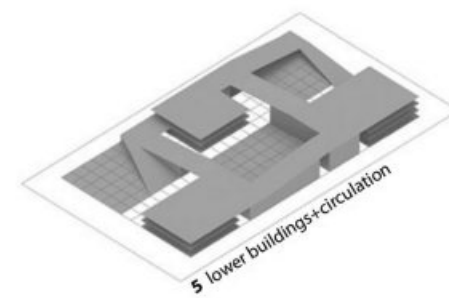
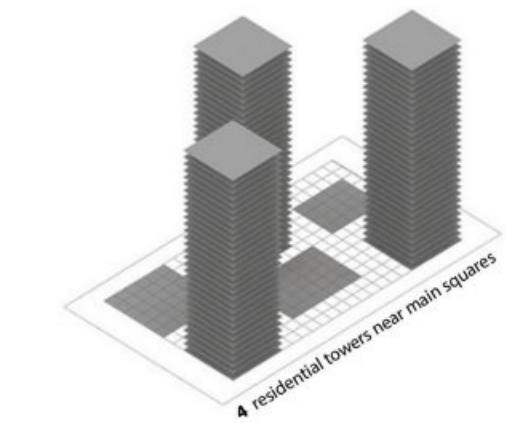
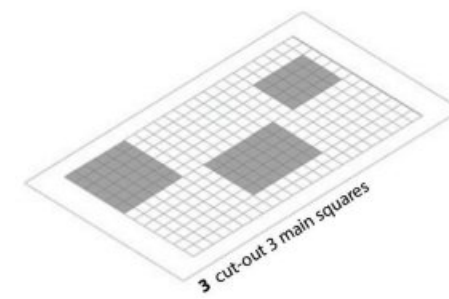
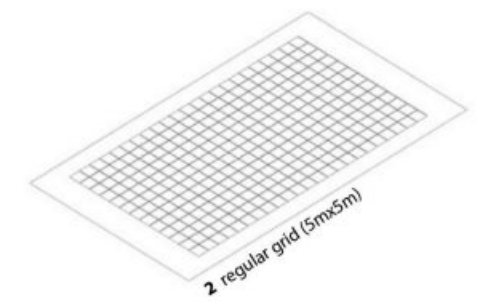
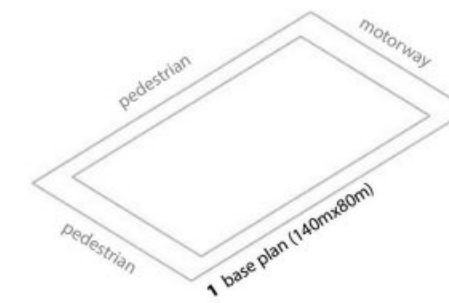
Vertical Addis

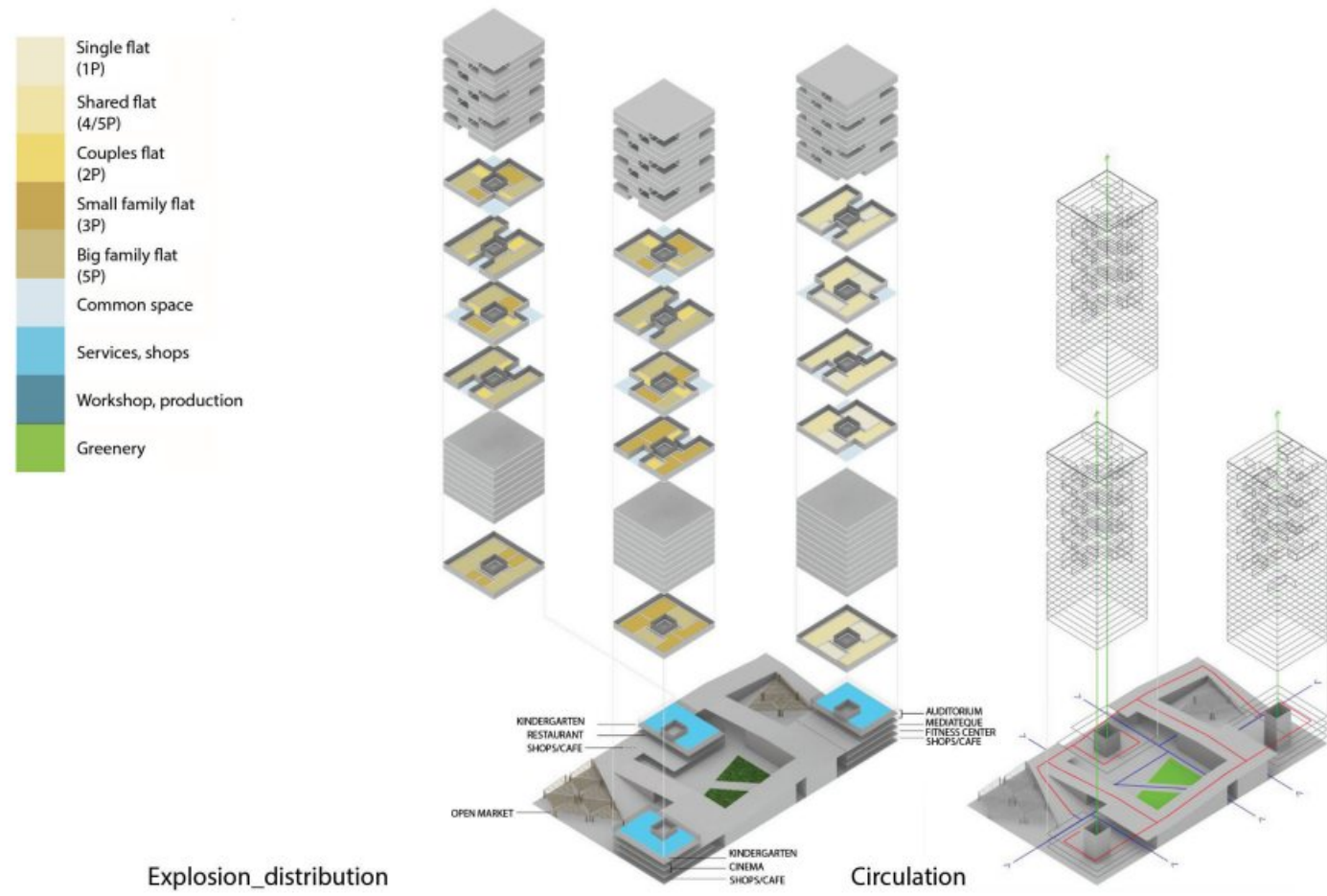
Bauhaus Universität Weimar - Master Design Course





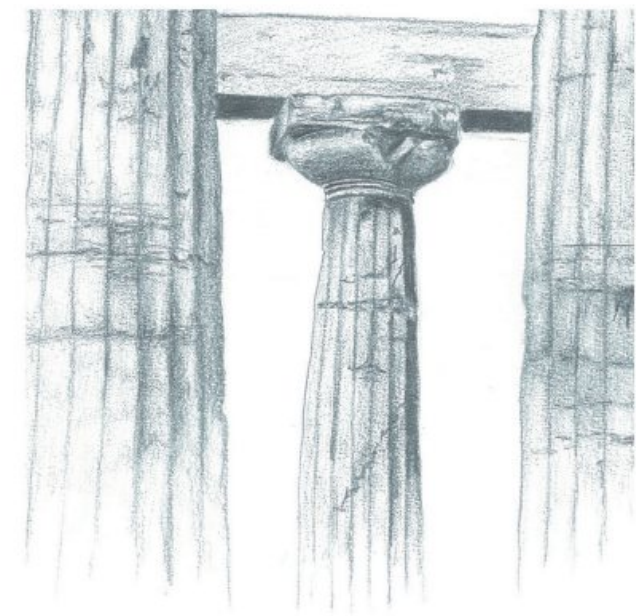
The recent urban expansion of Addis Ababa, the Ethiopian capital, has led to the necessity to create new expansion areas for new buildings. The goal was to provide each project site with new constructions capable of housing within them residential functions addressed to different social classes and common spaces for aggregation, commercial activities, workshops, handicraft workshops and green spaces. Respecting a minimum number of inhabitants to be allocated to each type of accommodation, the design project created three residential tower buildings, connected by low buildings, which, in addition to housing the other required activities, act as connecting bodies between the towers, using the roof as a connecting space. For the cladding of the façades, it was decided to use wooden panelling with movable inserts and slats spaced in such a way as to allow the air to filter through, so as to protect the dwellings from the strong winds at high altitudes, but at the same time to ventilate the rooms and provide the right orientation in the torrid African climate.





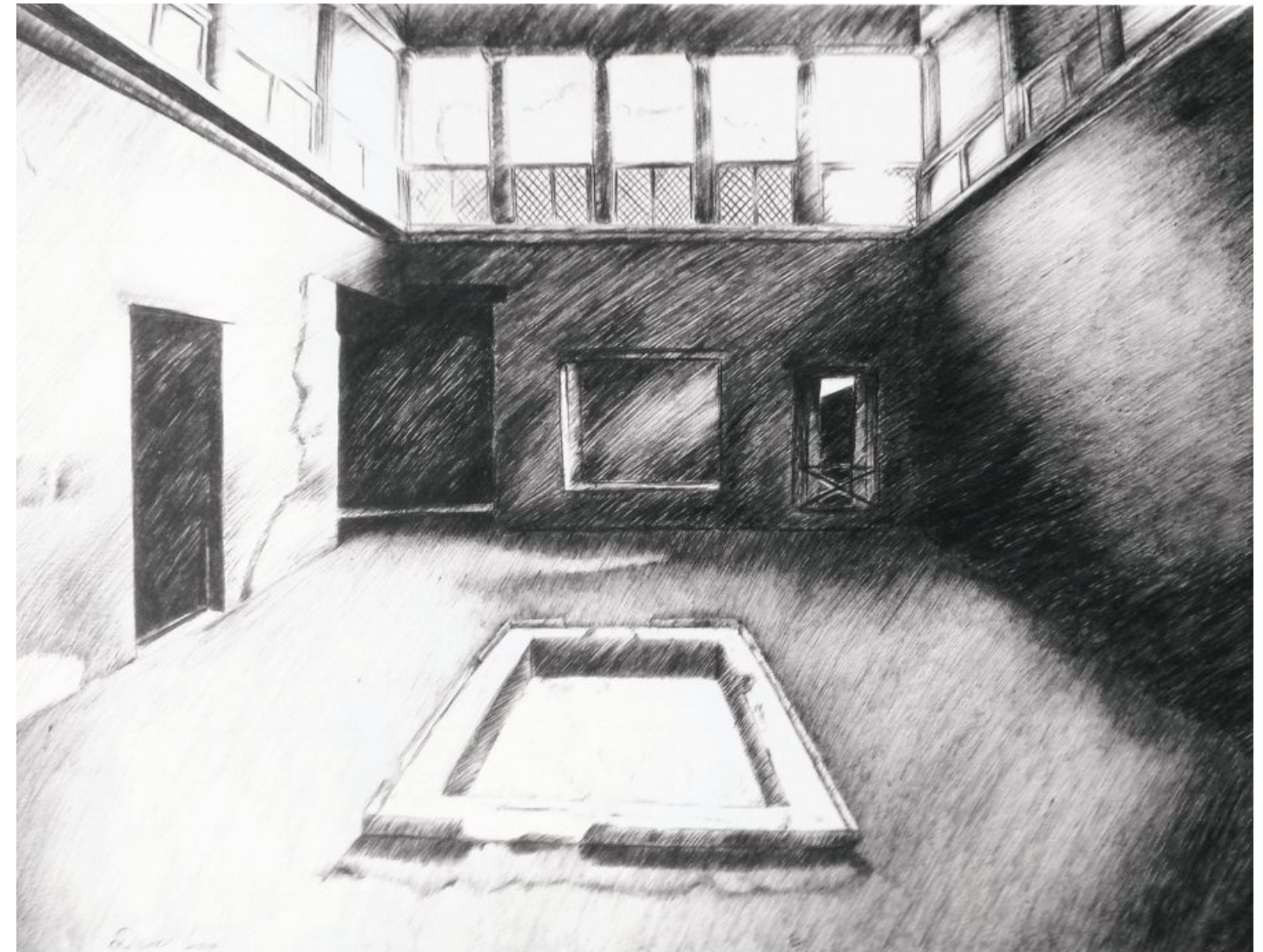
Paestum + Ercolano

Architecture Drawings





Temples of Paestum - live drawing



Ercolano, Samnite House - live drawing



Bauhaus Summaery 2014

